



## UP 20-14 BXA PM

: 2 .. 95 °C  
 60 °C  
 983.2 / ³

TF : 95  
 : CE, VDE

MS 68

, EPDM, PPO,

10  
 1 1/4  
 110

C : 0.6  
 : 7  
 : 50 Hz  
 : 1 x 230 V  
 3: 0.07 A  
 : 0.6  
 (IEC 34-5): IP44  
 (IEC 85): F

1.35  
 1.51  
 0.003 ³

1 UP 20-14 BXA PM



AUTOADAPT  
AUTOADAPT,

100%

PM.

COMFORT

: EN 60335-1 EN 60335-2-51.

IEC 61140, II,

AUTOADAPT  
100%

AUTOADAPT. AUTOADAPT

( ).

AUTOADAPT

20-50

24

« »

AUTOADAPT  
15

AUTOADAPT

30

legionella.

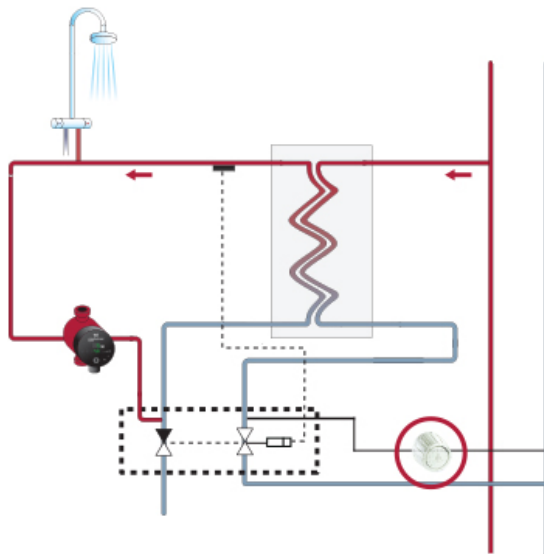
AUTOADAPT

AUTOADAPT

Grundfos

AUTOADAPT

Grundfos



: 2.. 95 °C  
 : 60 °C  
 : 983.2 / ³  
 TF : 95  
 : CE,VDE

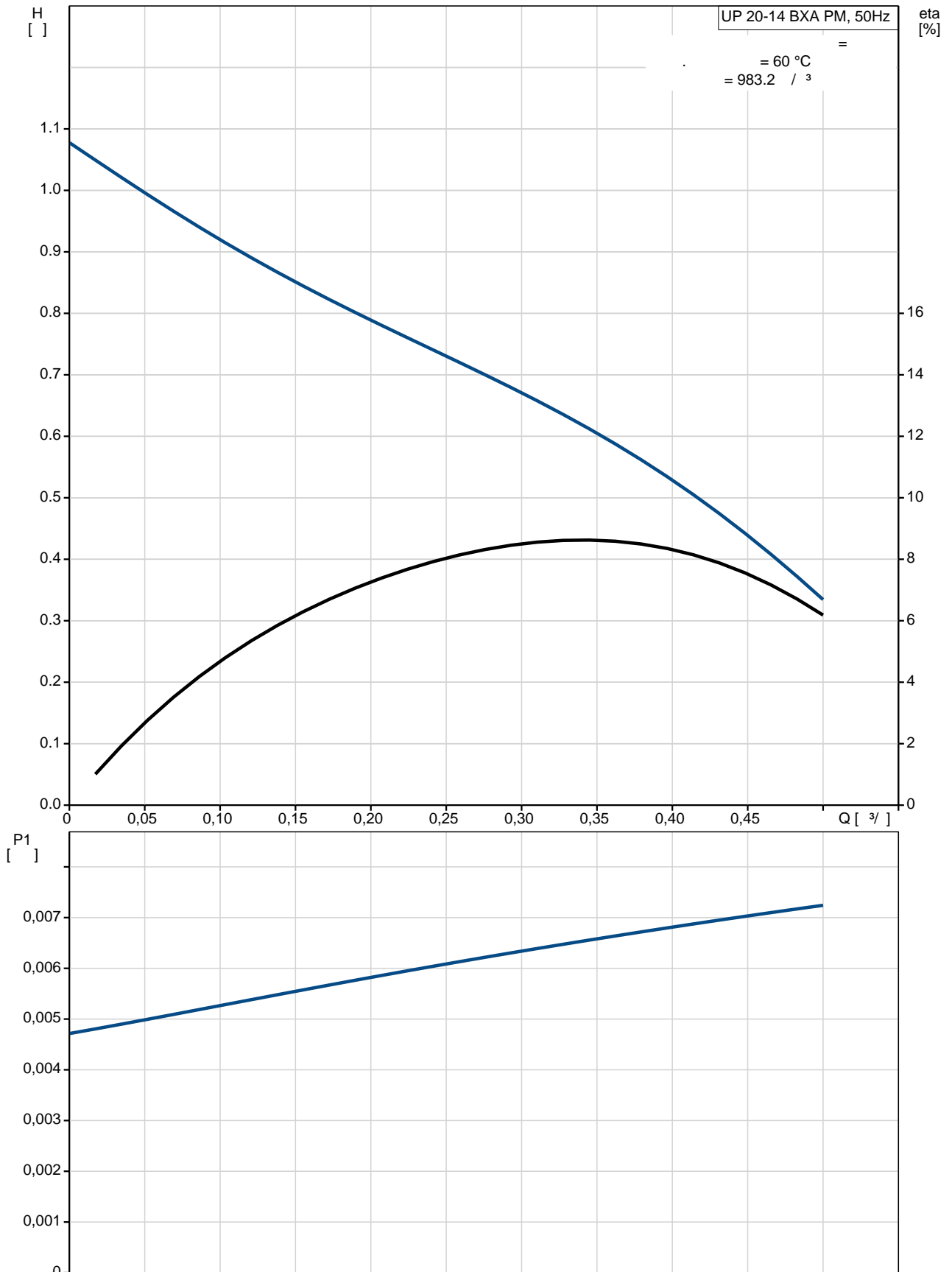
MS 68

, EPDM, PPO,

: 10  
 : 1 1/4  
 : 110  
 C : 0.6  
 : 7  
 : 50 Hz  
 : 1 x 230 V  
 3: 0.07 A  
 : 0.6  
 (IEC 34-5): IP44  
 (IEC 85): F

: 1.35  
 : 1.51  
 : 0.003 ³

## UP 20-14 BXA PM 50



UP 20-14 BXA PM

EAN

TF

1  
14  
95  
CE, VDE

MS 68

PPO,

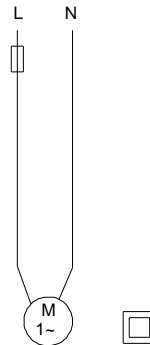
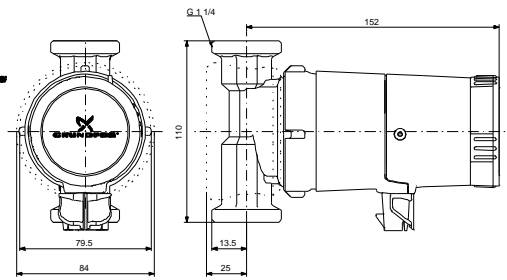
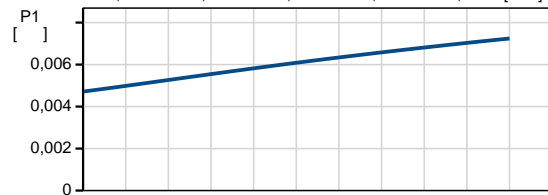
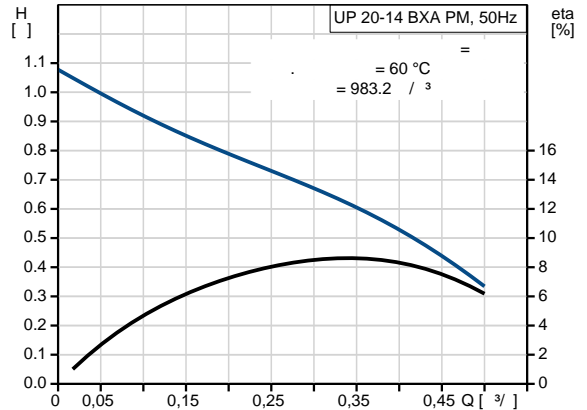
, EPDM,

10  
1 1/4  
110

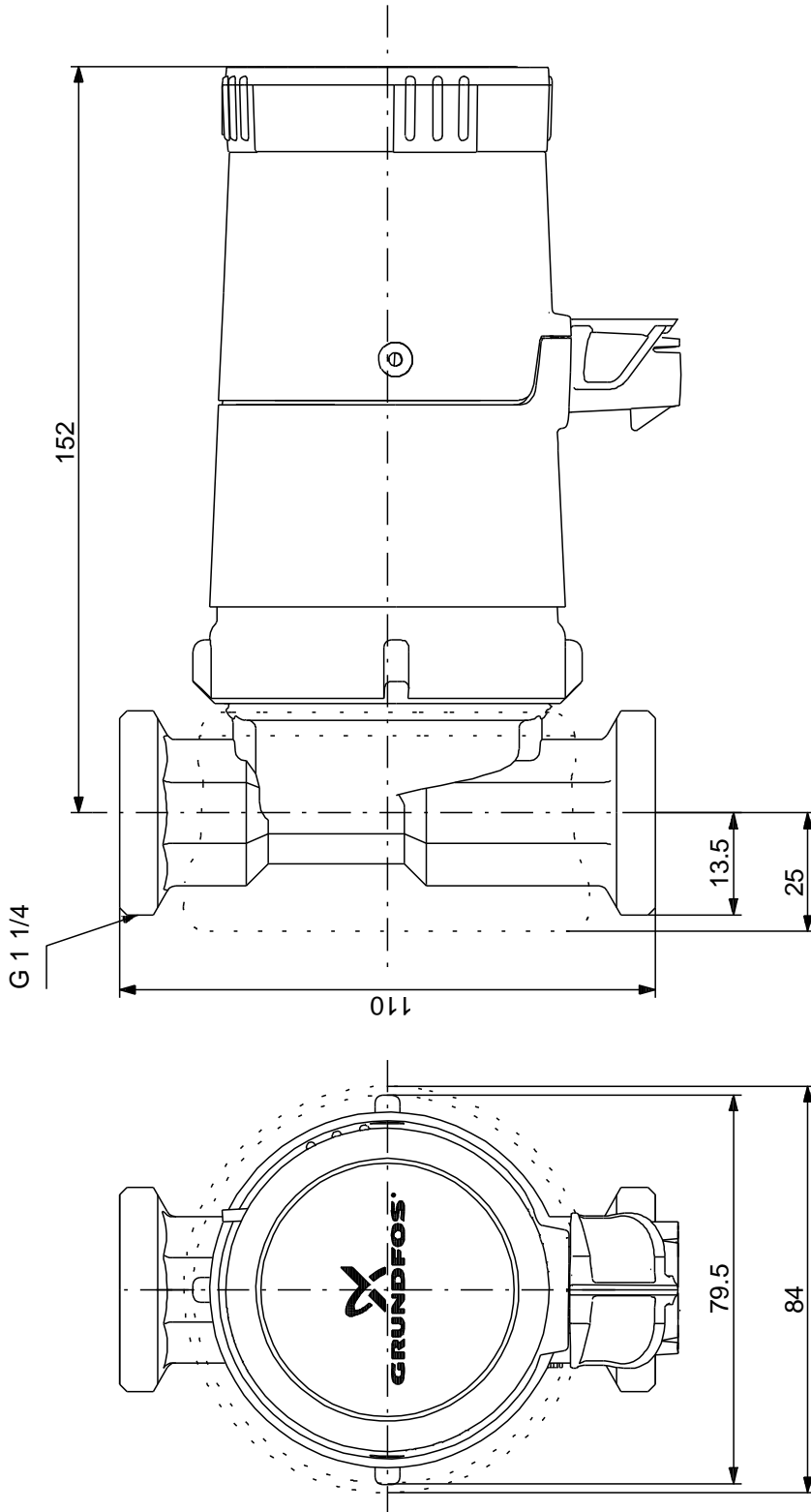
2 .. 95 °C  
60 °C  
983.2 / 3

C : 0.6  
7  
50 Hz  
1 x 230 V  
3: 0.07 A  
0.6  
(IEC 34-5): IP44  
(IEC 85): F

1.35  
1.51  
0.003 3



**UP 20-14 BXA PM 50**



**UP 20-14 BXA PM 50**

