

1 **SEG.40.26.2.50B**



SmartTrim

-
-
-
-

: NCS9000N/RAL 9005, 30, 100 .

(SiC/SiC)

-
-

SmartTrim,

SmartTrim

(VDE).

AUTOADAPT:

: 0..40 °C
 998.2 / 3

: SIC/SIC
 : CARBON/CERAMICS
 : PA-I
 - : ISO9906:2012 3B2

EN1561 EN-GJL-200

EN1561 EN-GJL-200

: 40 °C

: 6
 : DIN
 : DN40/50
 : DN 40
 : PN 10
 : 10
 : 96076063

:
 - P1: 3.2
 - P2: 2.6
 : 50 Hz
 : 3 x 400-415
 : +6/-10 %
 : 30
 : 6 A
 : 33 A

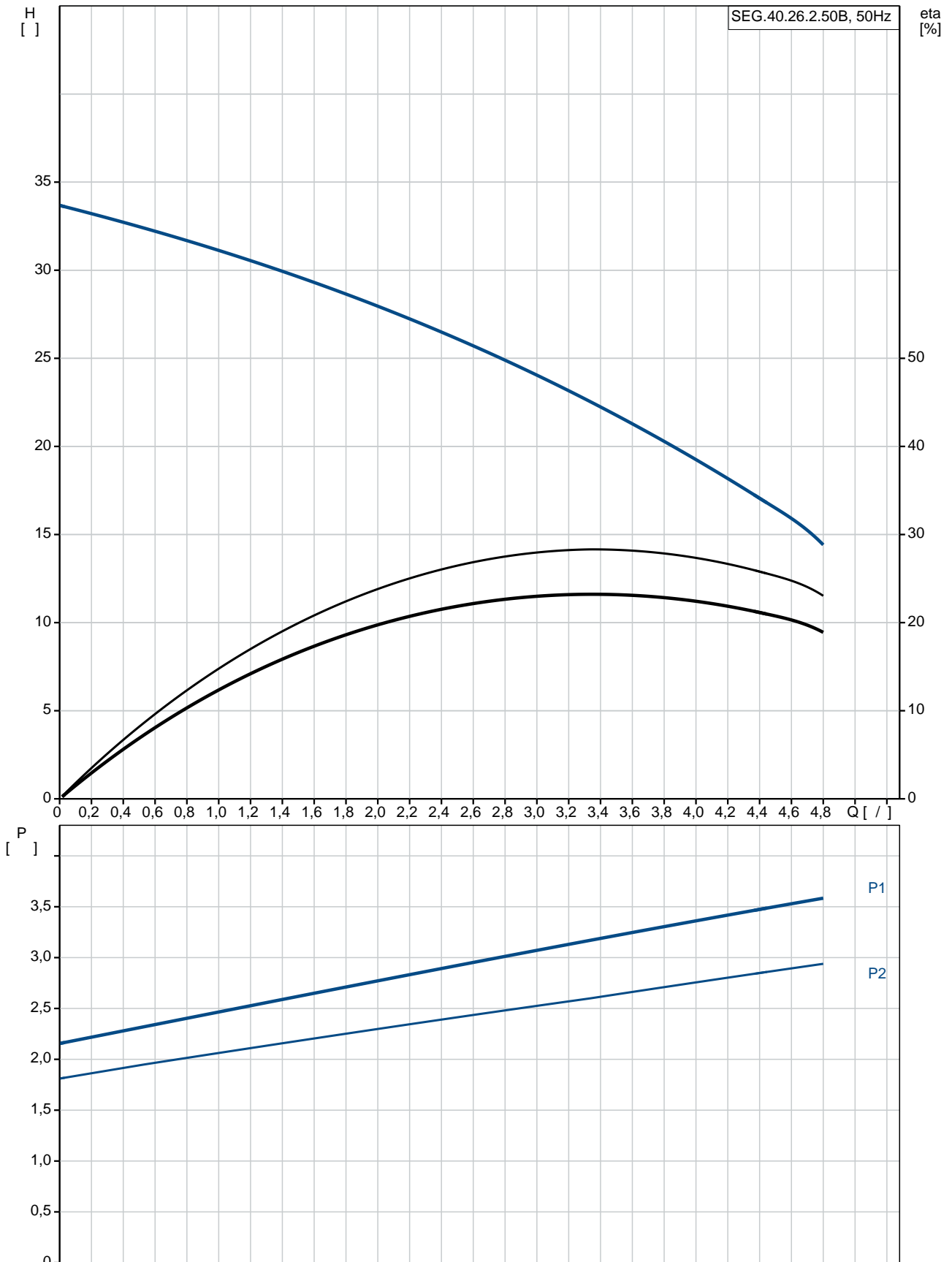
: 2.8 A

Cos phi - : 0,87
 Cos phi - : 3/4 : 0,81
 Cos phi - : 1/2 : 0,68

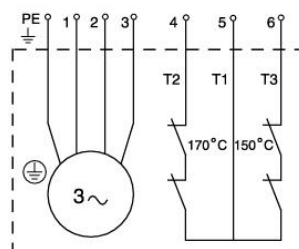
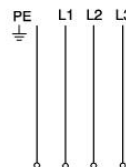
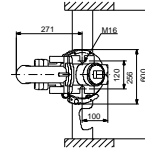
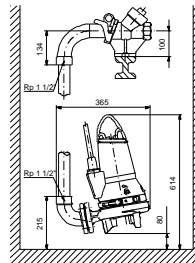
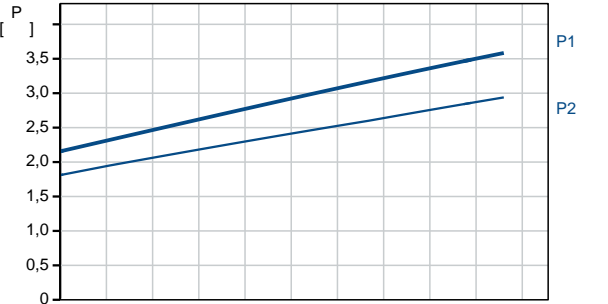
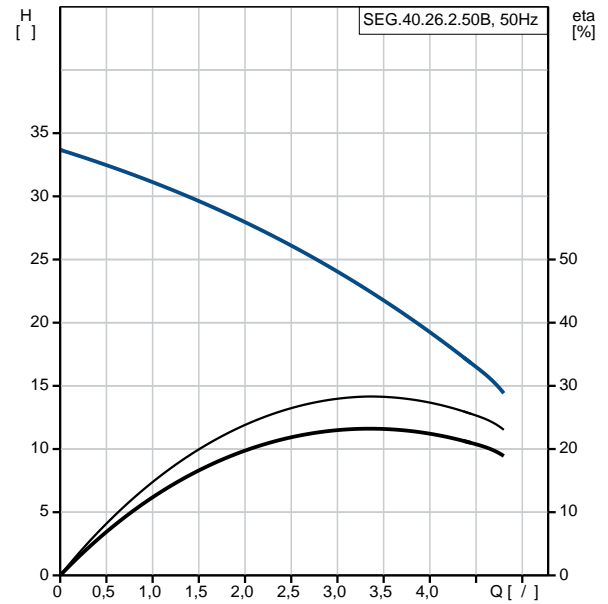
: 2870 /
 : 0.0093 2

: 82 %
 3/4 : 84 %
 1/2 : 84 %
 : 2
 :
 (IEC 34-5): IP68
 (IEC 85): F
 :
 : 10
 : LYNIFLEX
 : NO PLUG
 :
 : 65.9

SEG.40.26.2.50B 50

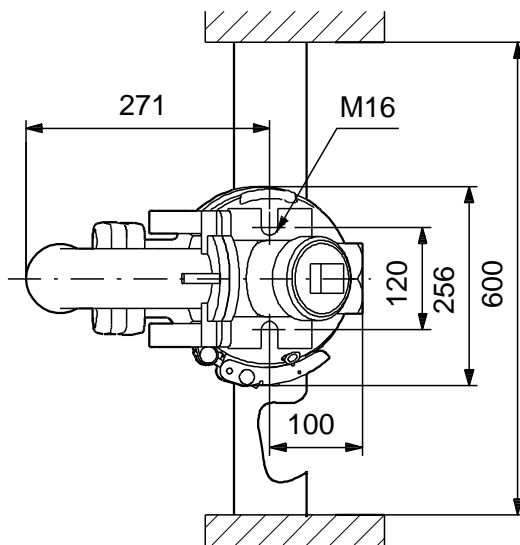
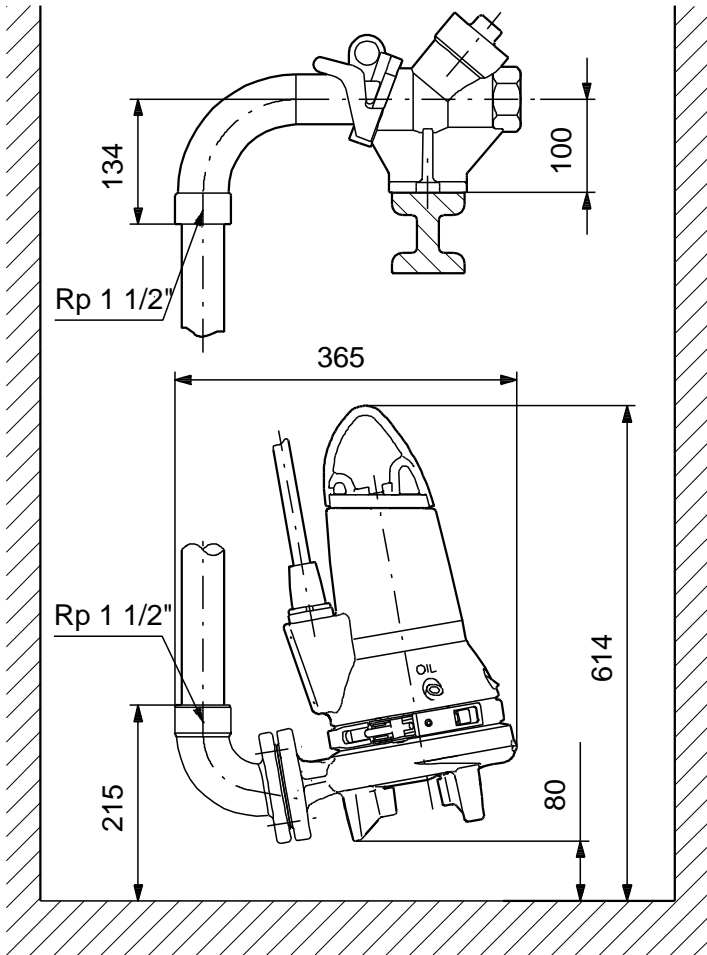


| | | |
|---------|-------|--|
| | | SEG.40.26.2.50B |
| EAN | | |
| Ma | | 5.28 / 33.8 |
| | | SIC/SIC CARBON/CERAMIC S |
| | | PA-I ISO9906:2012 3B2 |
| | | EN1561 EN-GJL-200 |
| | | EN1561 EN-GJL-200 |
| | | 40 °C |
| | | 6 DIN DN40/50 DN 40 PN 10 10 SUBMERGED 96076063 |
| | | 0 .. 40 °C 998.2 / ³ |
| | - P1: | 3.2 |
| | - P2: | 2.6 |
| | | 50 Hz 3 x 400-415 +6/-10 % 30 6 A 33 A 2.8 A |
| Cos phi | - | 0.87 |
| Cos phi | 3/4 | 0.81 |
| Cos phi | 1/2 | 0.68 |
| | | 2870 / 0.0093 ² |

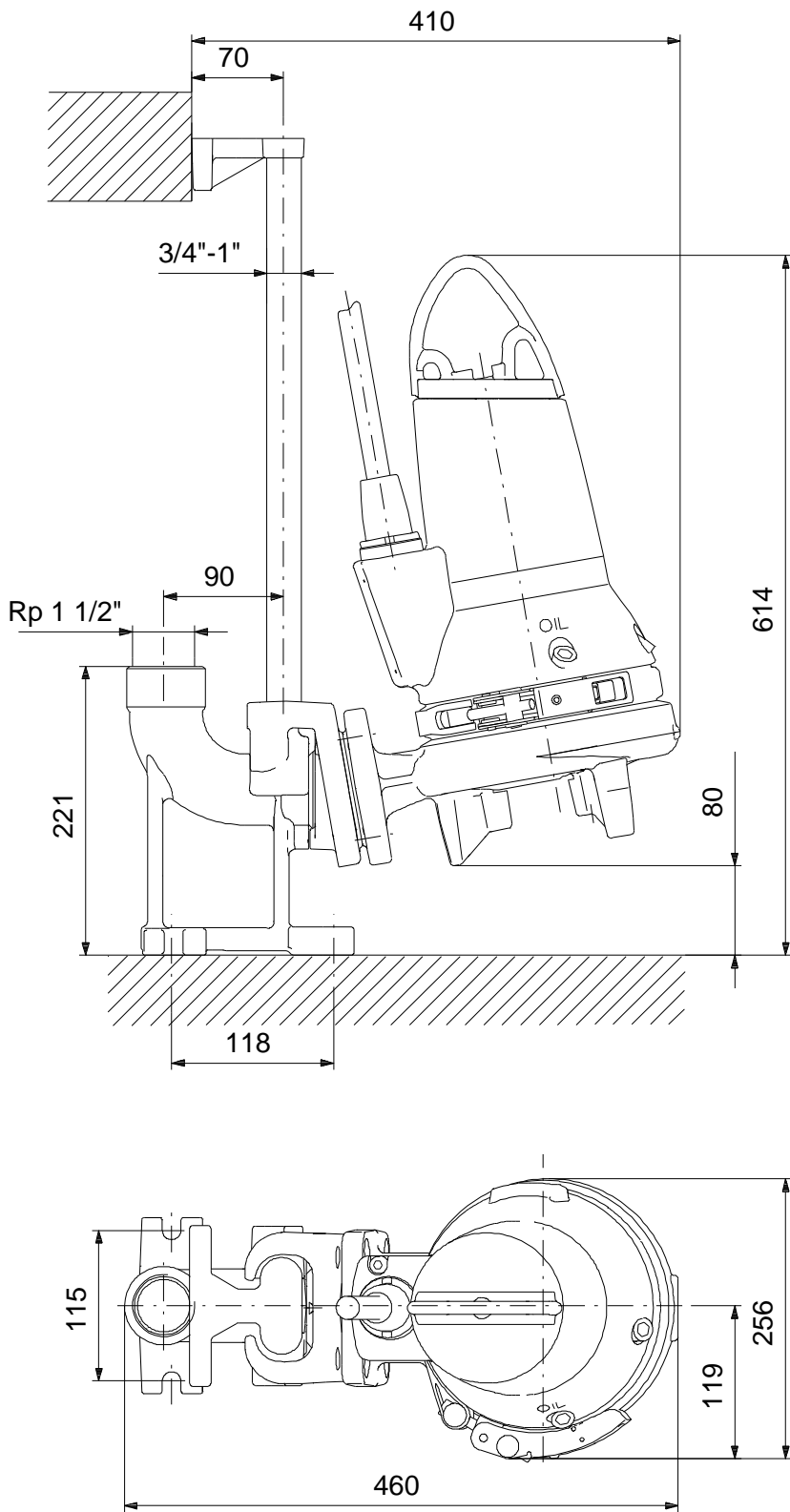


| | | |
|-------------|---|----------|
| | : | 82 % |
| 3/4 | : | 84 % |
| 1/2 | : | 84 % |
| : | : | 2 |
| : | : | |
| (IEC 34-5): | : | IP68 |
| (IEC 85): | : | F |
| : | : | |
| : | : | |
| : | : | 10 |
| : | : | LYNIFLEX |
| : | : | NO PLUG |
| : | : | |
| : | : | |
| I/O: | : | External |
| : | : | |
| AUTOADAPT: | : | |
| : | : | |
| : | : | 65.9 |

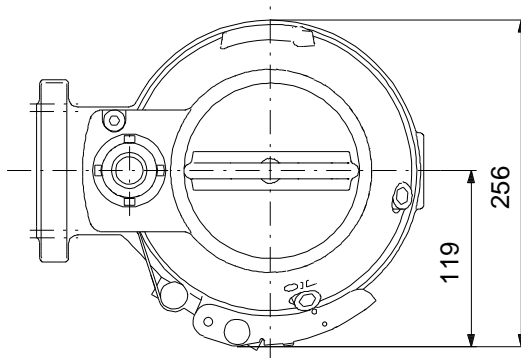
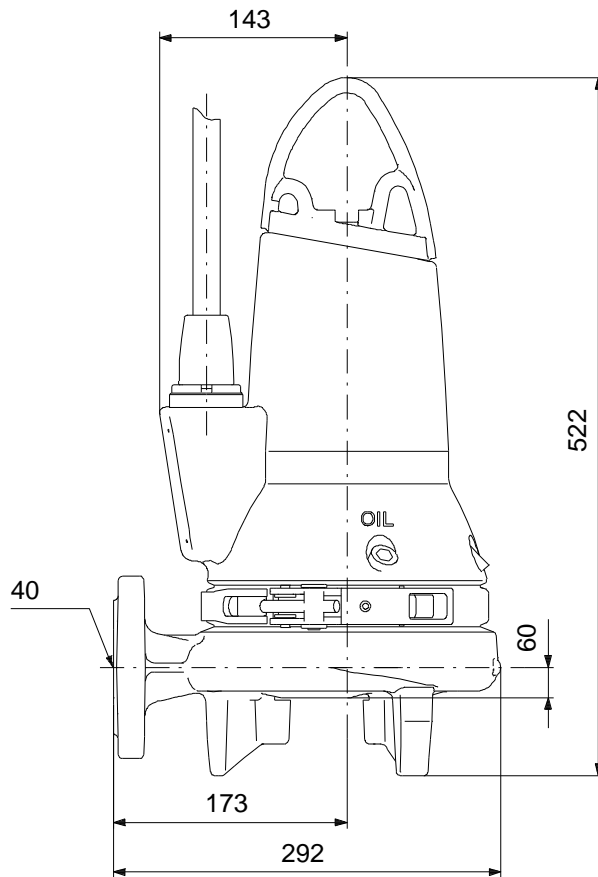
SEG.40.26.2.50B 50



SEG.40.26.2.50B 50

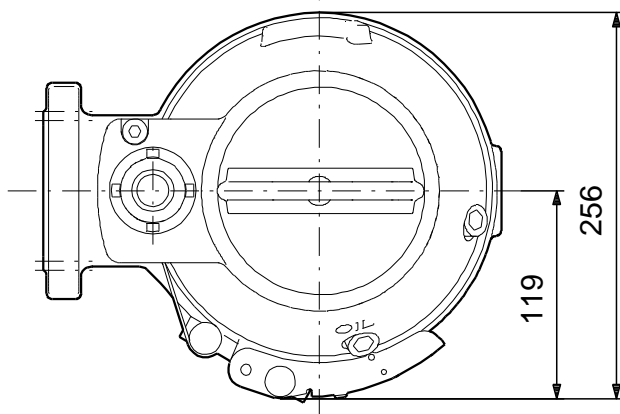
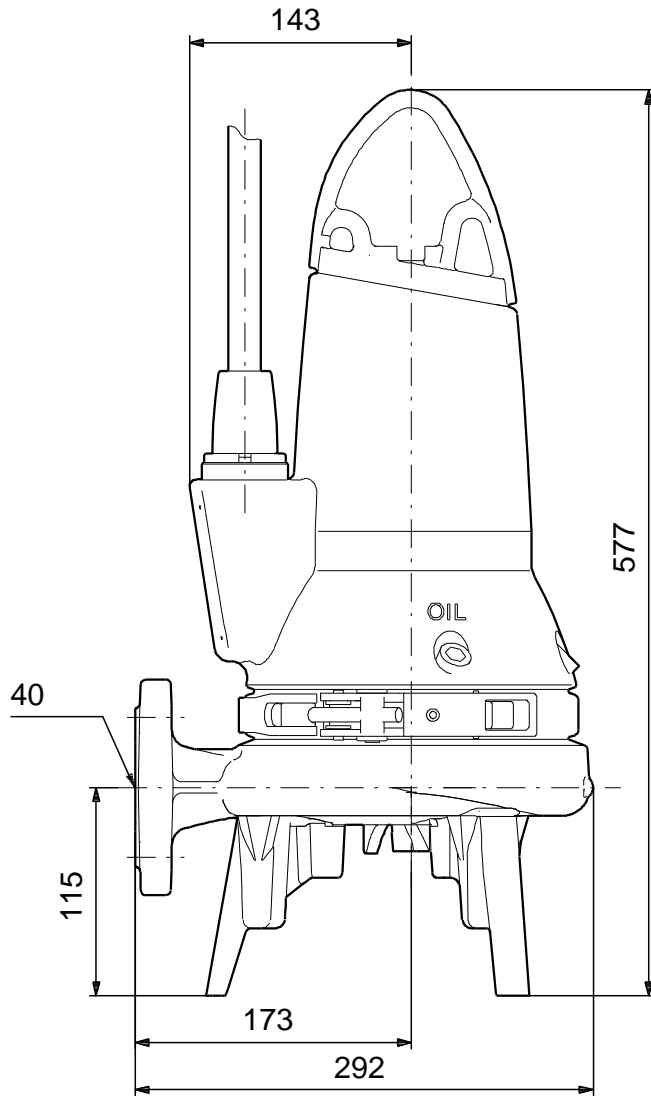


SEG.40.26.2.50B 50



! : [], .

SEG.40.26.2.50B 50



! [],

SEG.40.26.2.50B 50

