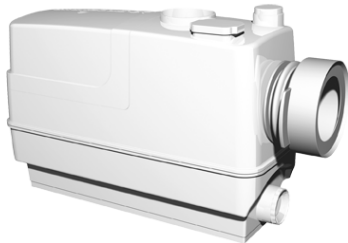


1 **SOLOLIFT2 CWC-3**



: 97775316

Sololift2 CWC-3 -

Sololift2 CWC-3

Sololift2 CWC-3

Ø22-40

DN100

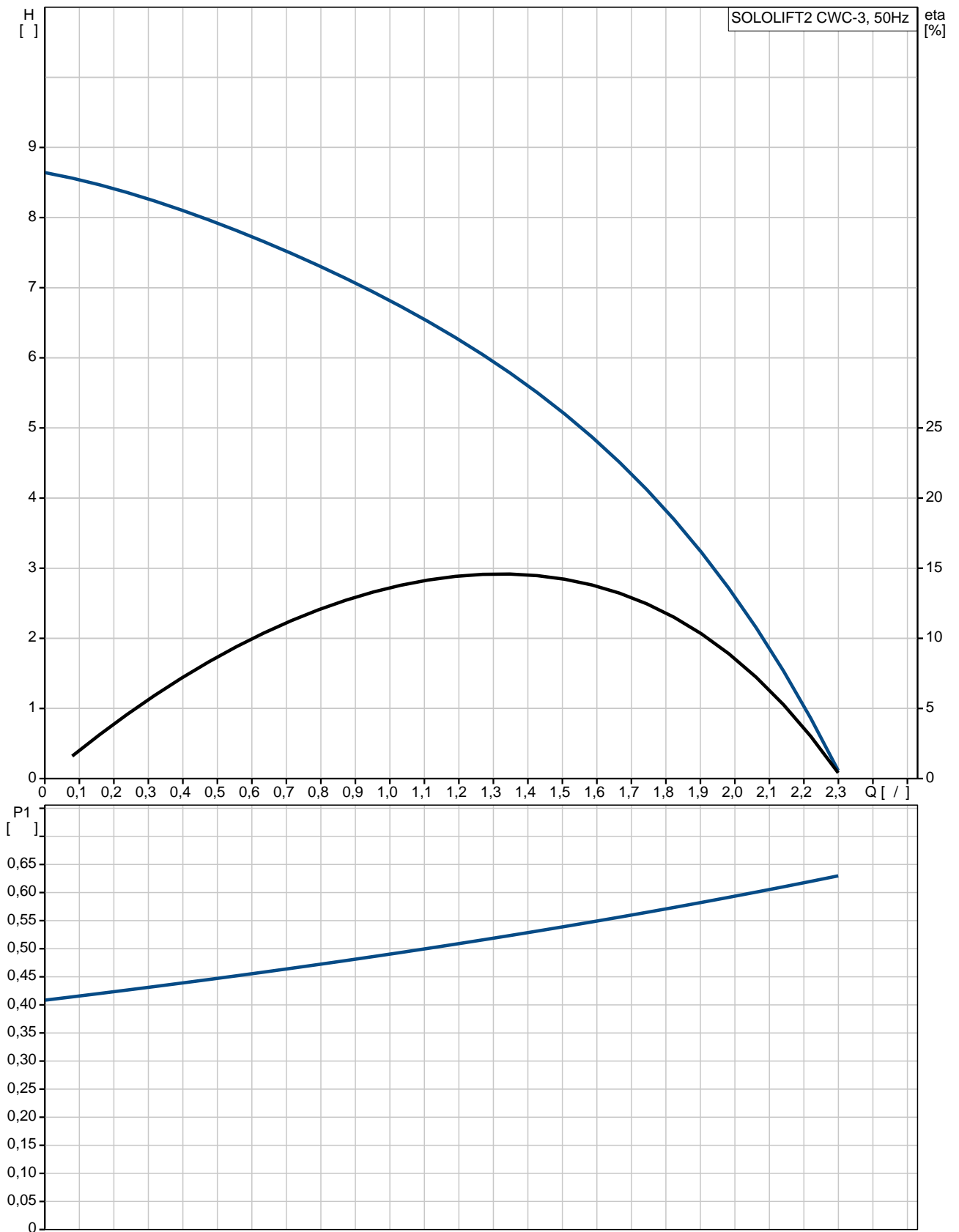
Ø36 40

EN12050-2,

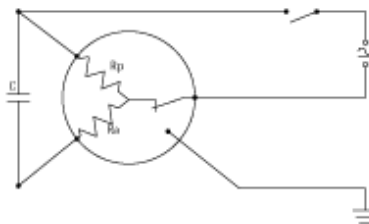
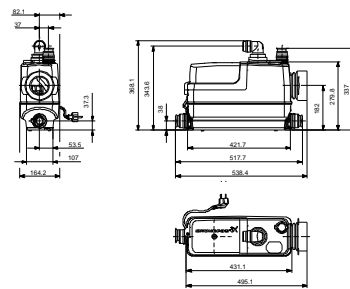
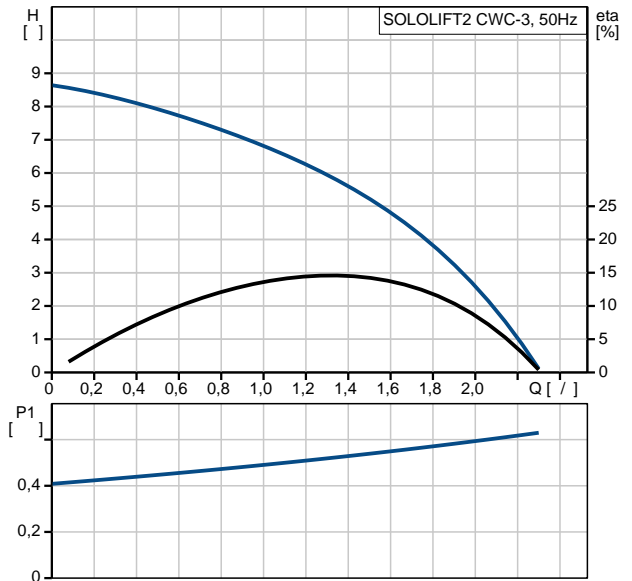
: 50 °C
: 998.2 / 3

: CE
 - : ISO 9906:2012 Grade 3B
 :
 : 32/36/40, 36/40/50, DN 100
 : 22/25/28/32/36/40
 : 3X0,75MM2
 - :
 - P1: 0.62
 : 50 Hz
 : 1 x 220-240 V
 : 3 A
 Cos phi - : 0,92
 : 2800 /
 (IEC 34-5): IP44
 (IEC 85): F
 : 1.2
 : H05VV-F
 : TYPE F (SCHUKO)
 :
 : 8.09
 : 9.69

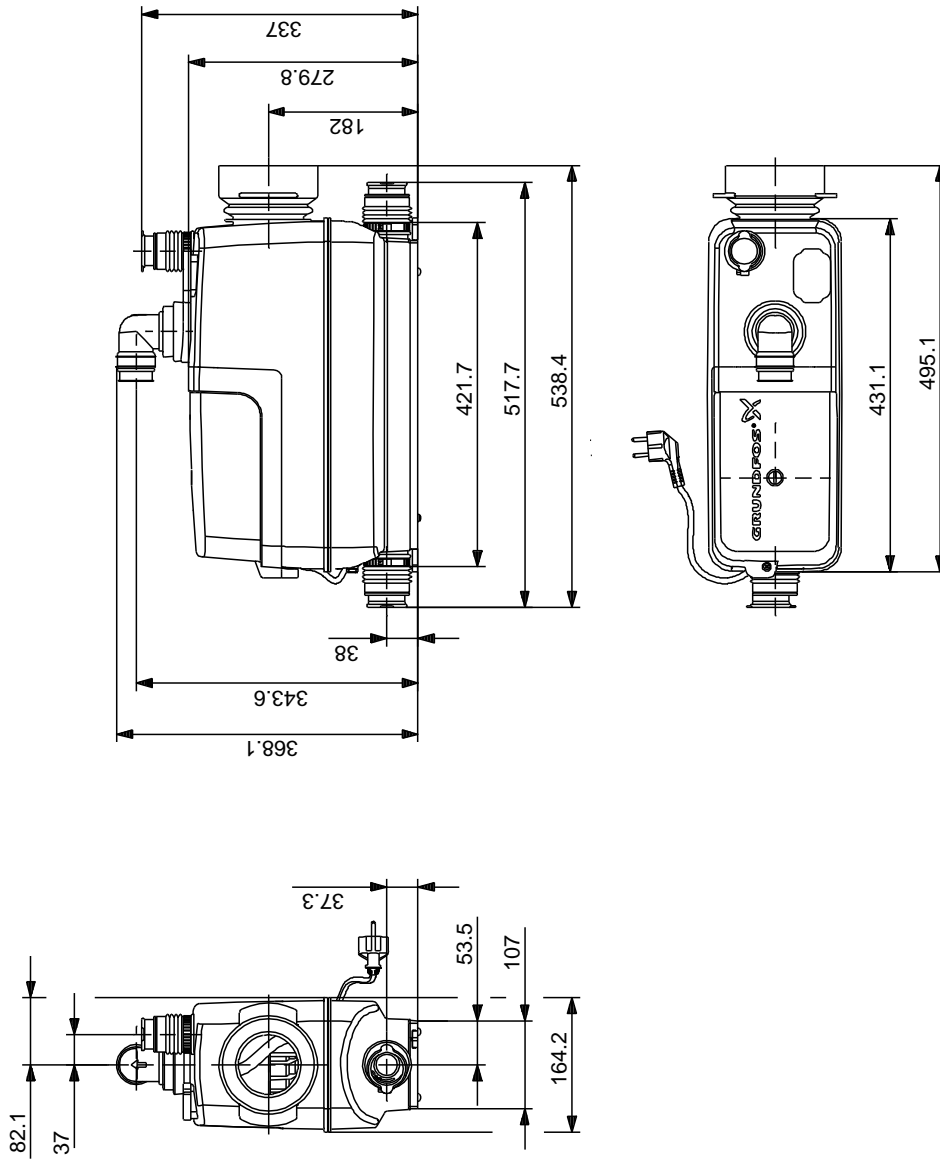
97775316 SOLOLIFT2 CWC-3 50

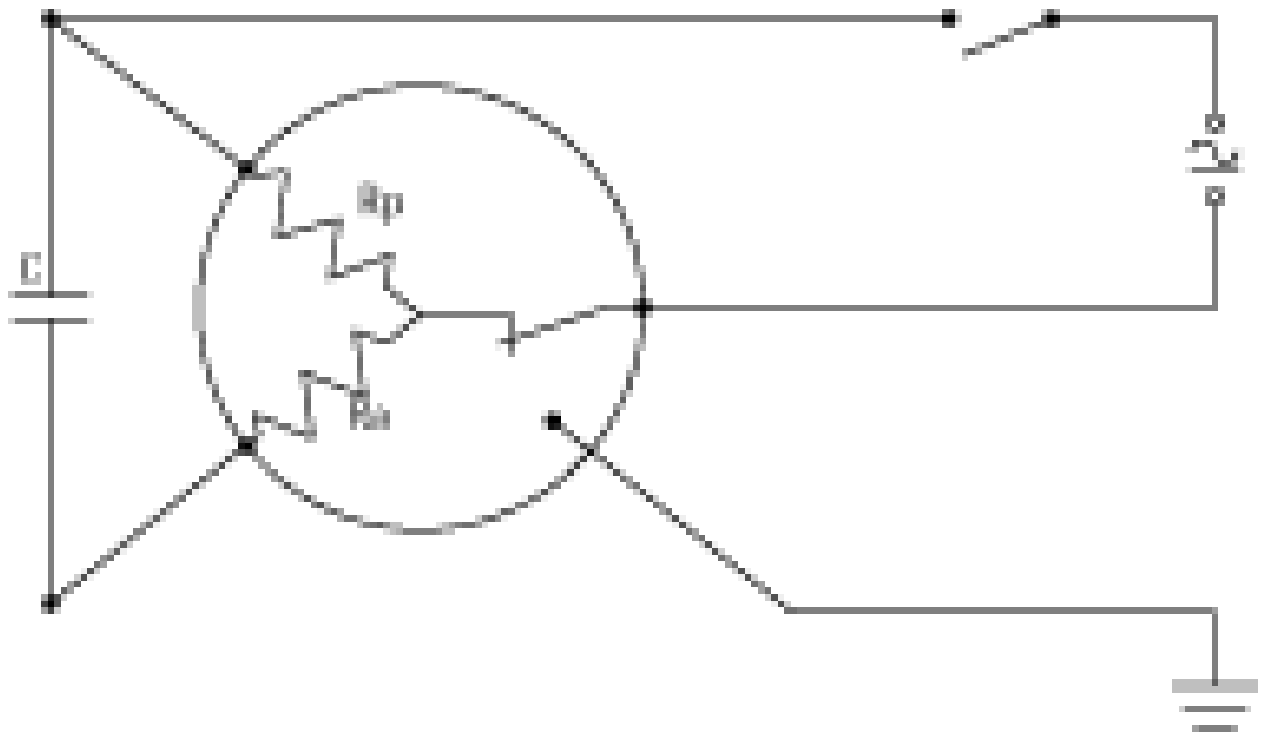


SOLOLIFT2 CWC-3	
97775316	
EAN	5710624187258
8.5	
CE	
ISO 9906:2012 Grade 3B	
32/36/40, 36/40/50, DN 100	
22/25/28/32/36/40	
3X0,75MM2	
50 °C	
998.2 / 3	
- P1: 0.62	
50 Hz	
1 x 220-240 V	
3 A	
Cos phi -	0,92
2800 /	
(IEC 34-5):	IP44
(IEC 85):	F
THERMIK S06-150-05	
1.2	
H05VV-F	
TYPE F (SCHUKO)	
8.09	
9.69	



97775316 SOLOLIFT2 CWC-3 50





! [], .