

1 **SOLOLIFT2 D-2**



: [97775318](#)

SOLOLIFT2 D-2

Sololift2 D-2 -

Sololift2 D-2

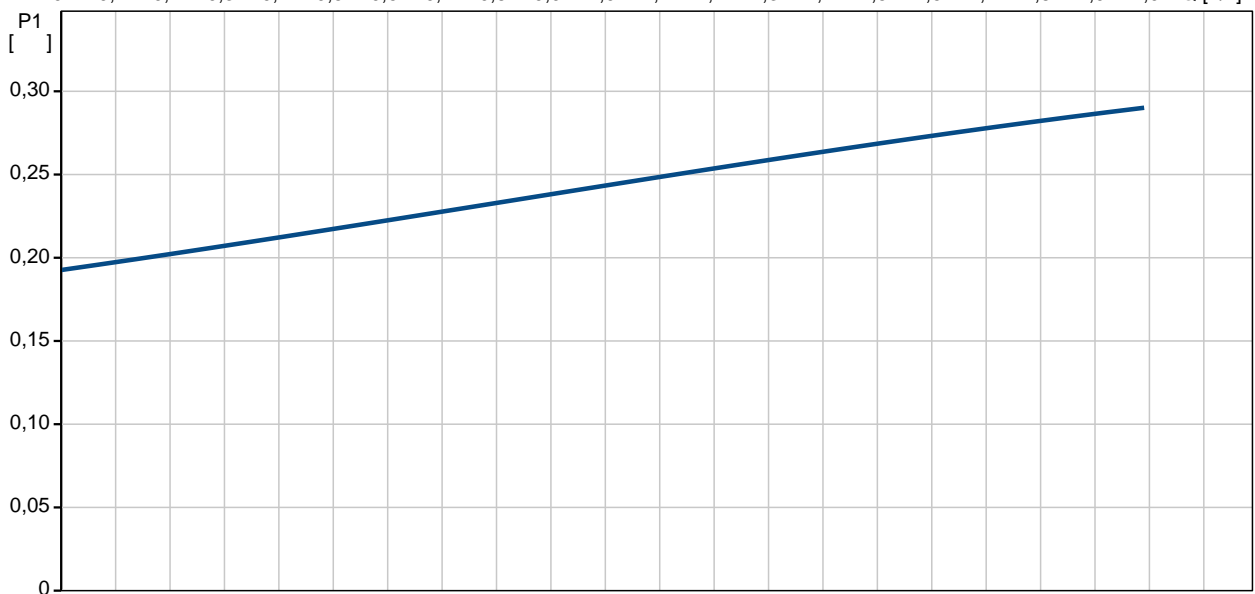
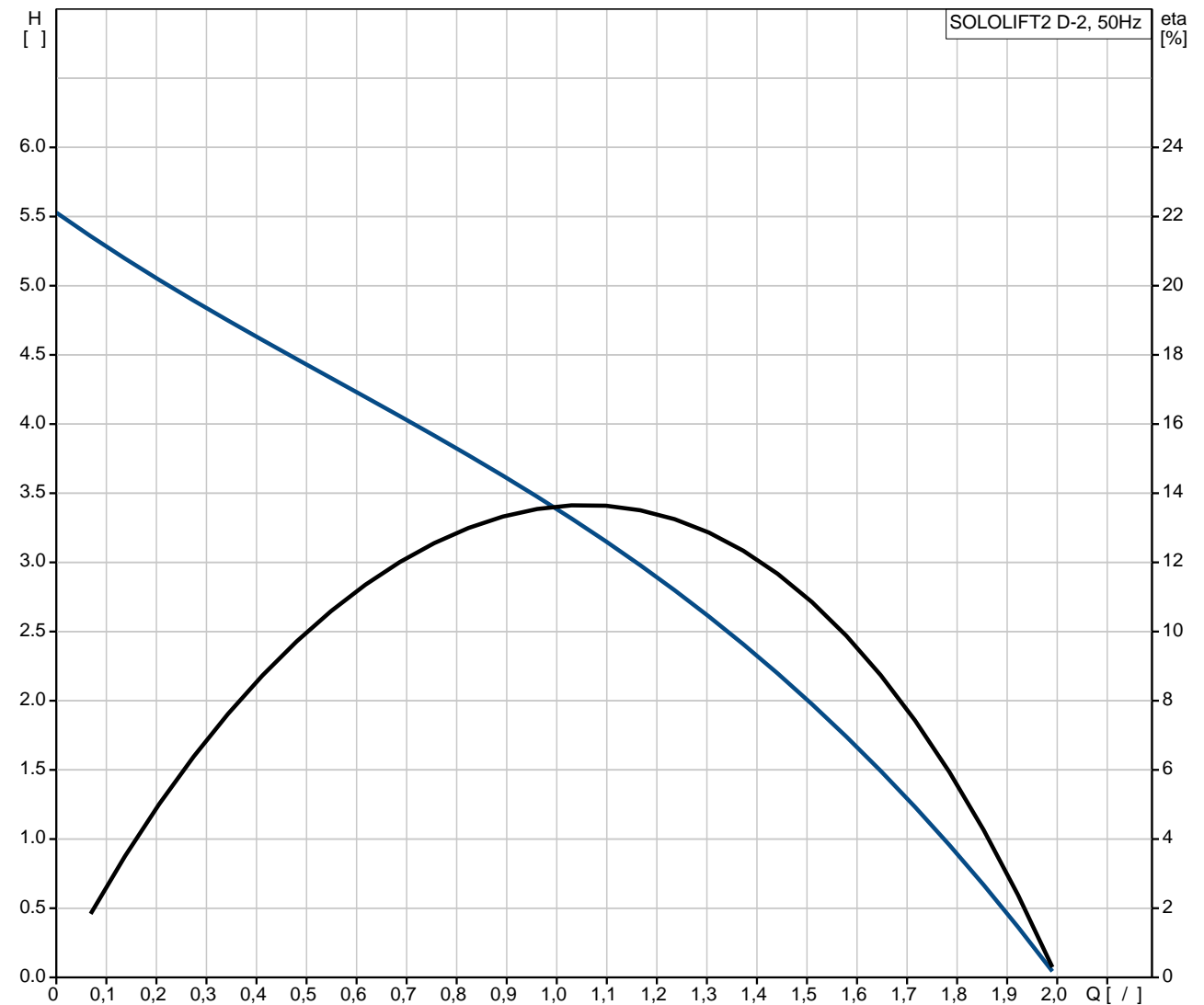
Sololift2 D-2

- ()
 - Ø22-36
 - « »
 - 40 - () Ø36
 -
 -

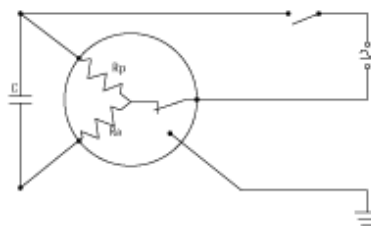
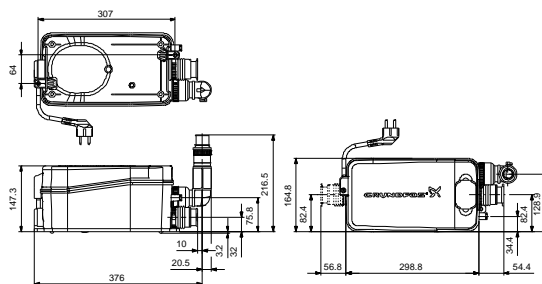
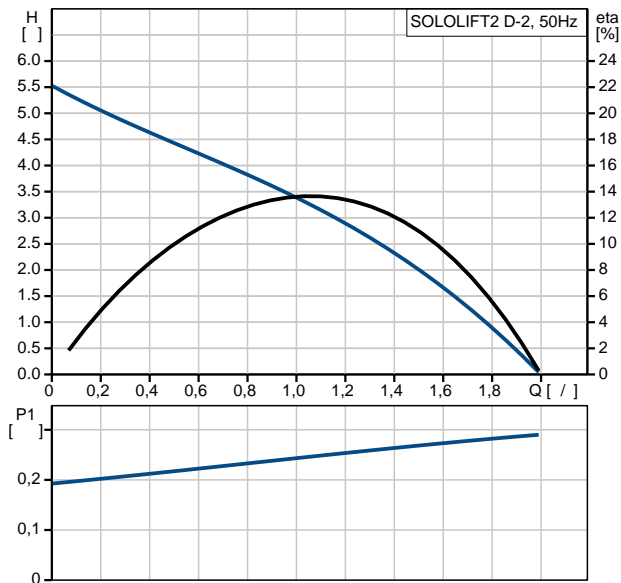
EN12050-2

: 50 °C
 : 998.2 / 3
 : CE
 - : ISO 9906:2012 Grade 3B
 : 36/40/50
 : 22/32
 : 3X0,75MM2
 - :
 - P1: 0.28
 : 50 Hz
 : 1 x 220-240 V
 : 1.3 A
 Cos phi - : 0,95
 : 2800 /
 (IEC 34-5): IP44
 (IEC 85): F
 : 1.2
 : H05VV-F
 : TYPE F (SCHUKO)
 :
 : 4.53
 : 5.53

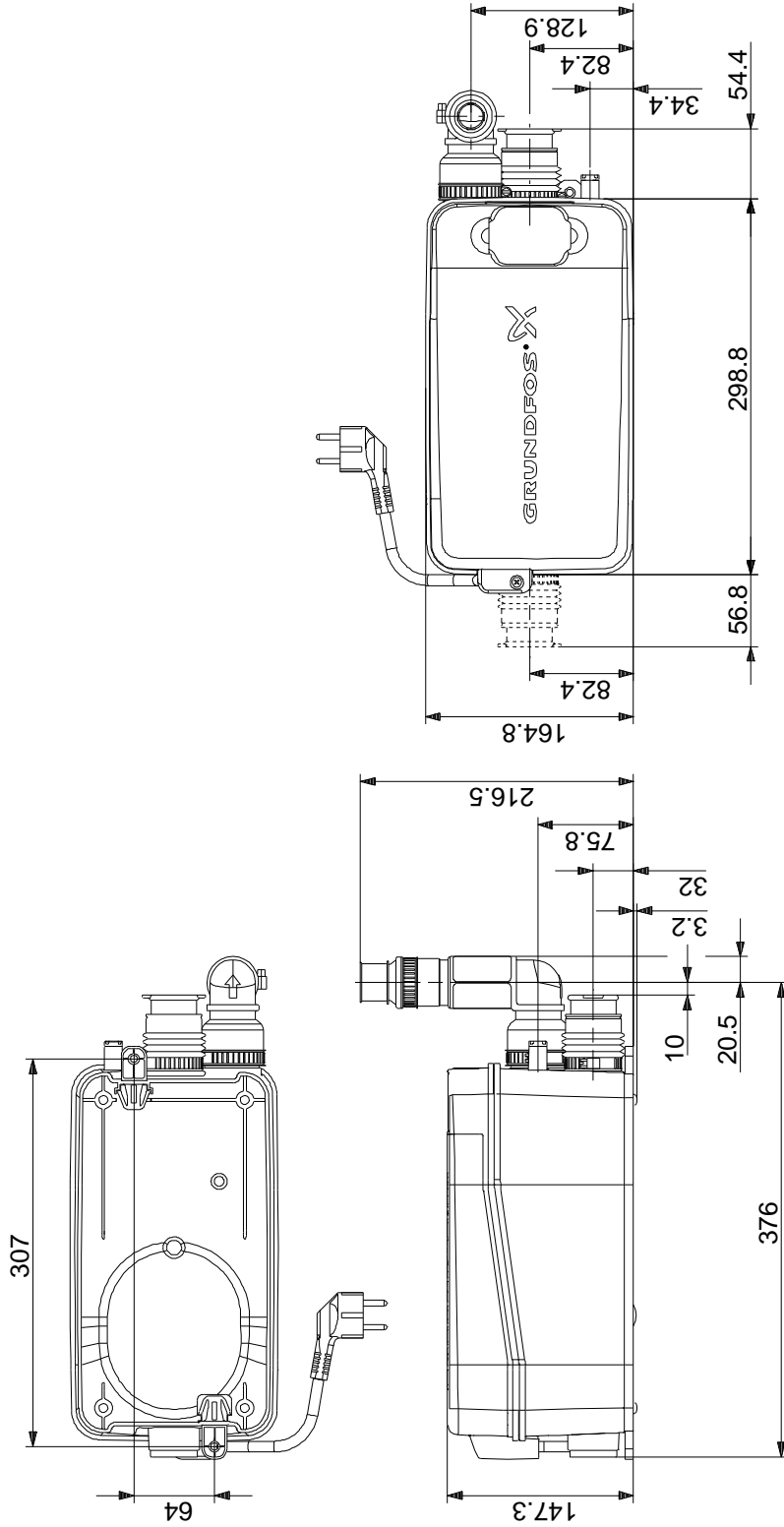
97775318 SOLOLIFT2 D-2 50

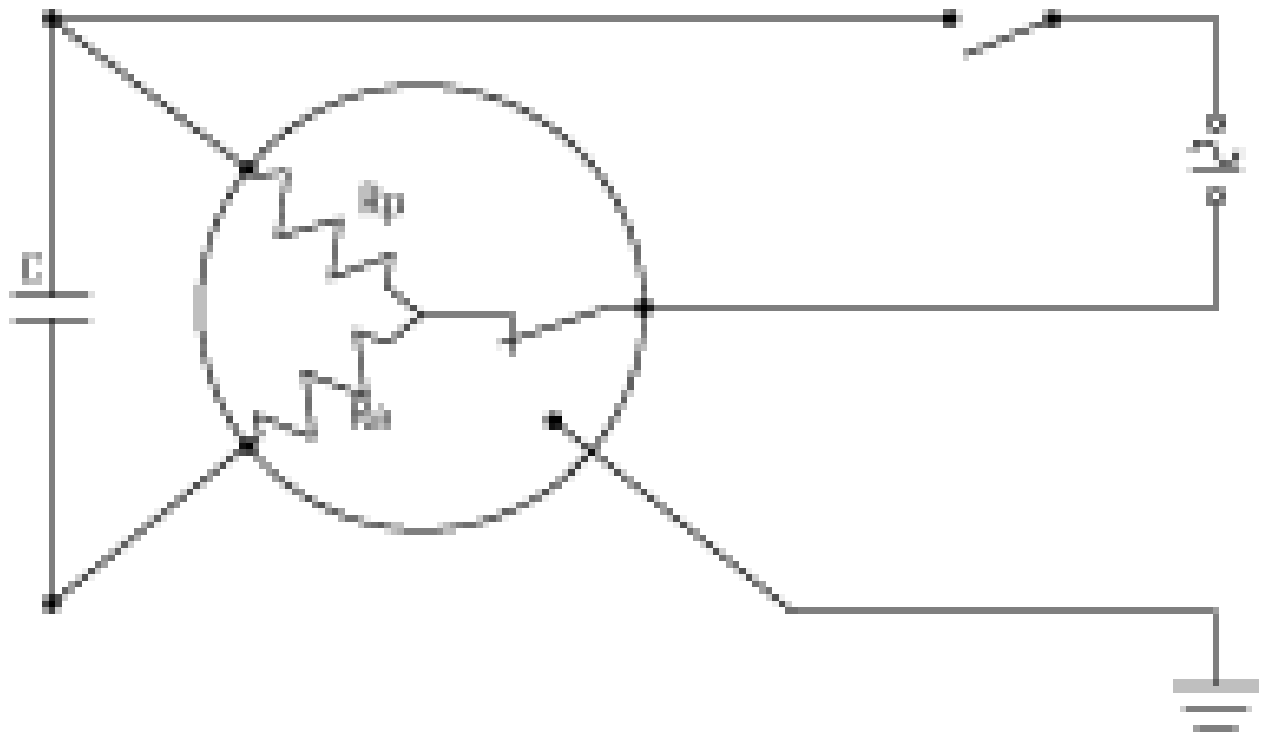


SOLOLIFT2 D-2	
97775318	
EAN	5710624187272
5.5	
CE	
ISO 9906:2012 Grade 3B	
36/40/50	
22/32	
3X0,75MM2	
50 °C	
998.2 / 3	
- P1:	0.28
	50 Hz
	1 x 220-240 V
	1.3 A
Cos phi -	0,95
	2800 /
(IEC 34-5):	IP44
(IEC 85):	F
	THERMIK S06-160-05
	1.2
	H05VV-F
	TYPE F (SCHUKO)
	4.53
	5.53



97775318 SOLOLIFT2 D-2 50





! [], .