

1 **SOLOLIFT2 WC-1**



: [97775314](#)

Sololift2 WC-1 -

Sololift2 WC-1

Sololift2 WC-1

- ()
 - Ø22-40
 - « »
 - DN100 () Ø36
 - 40 ()
 - ()
 -

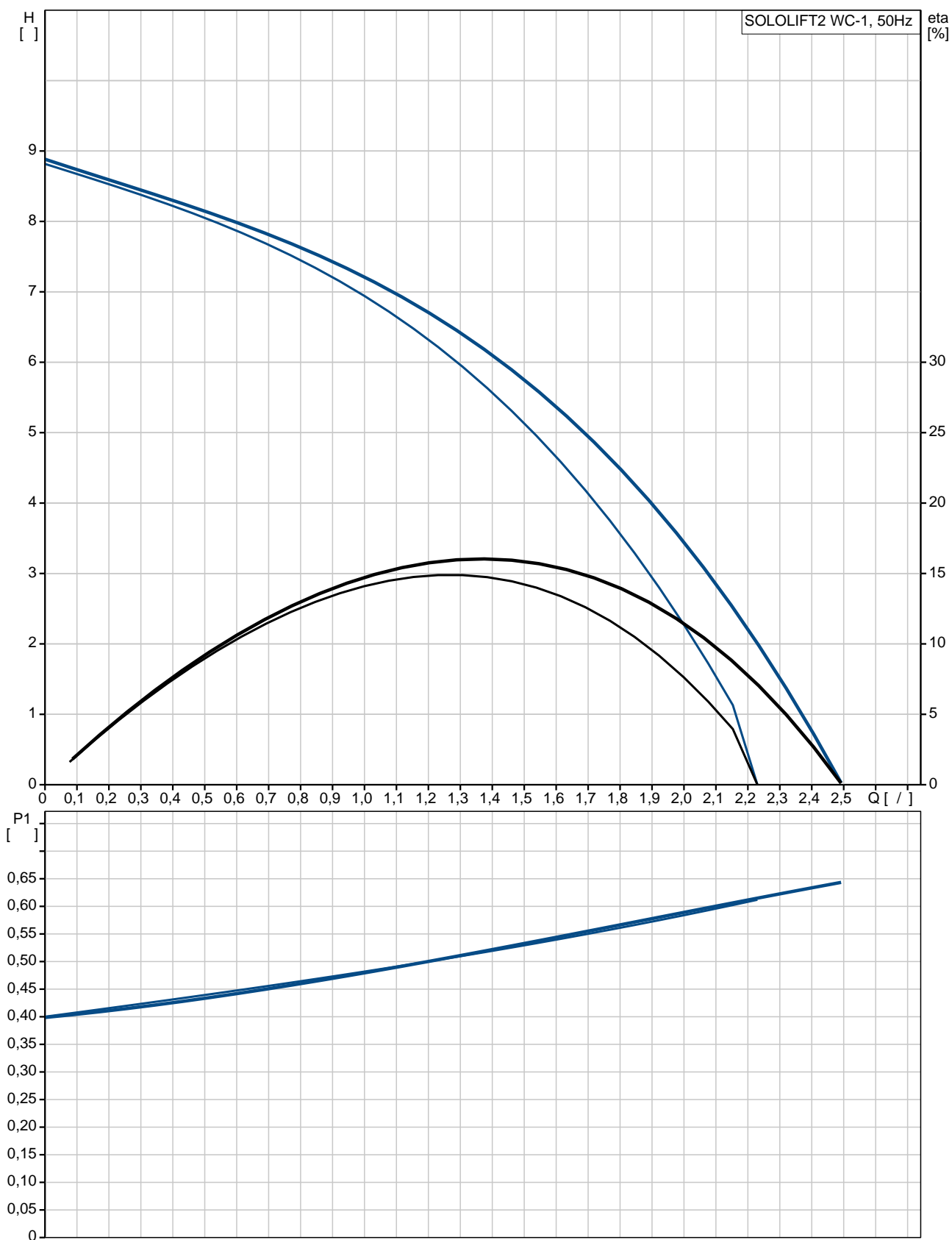
EN12050-3,

: 50 °C

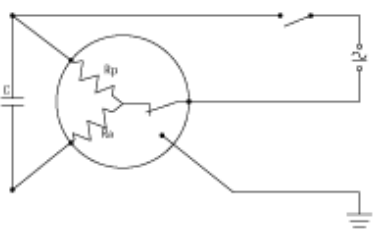
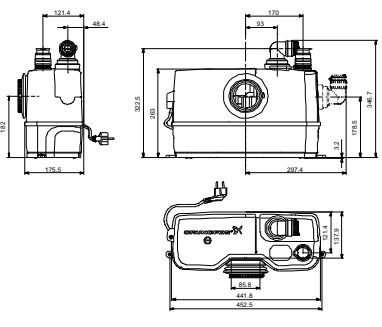
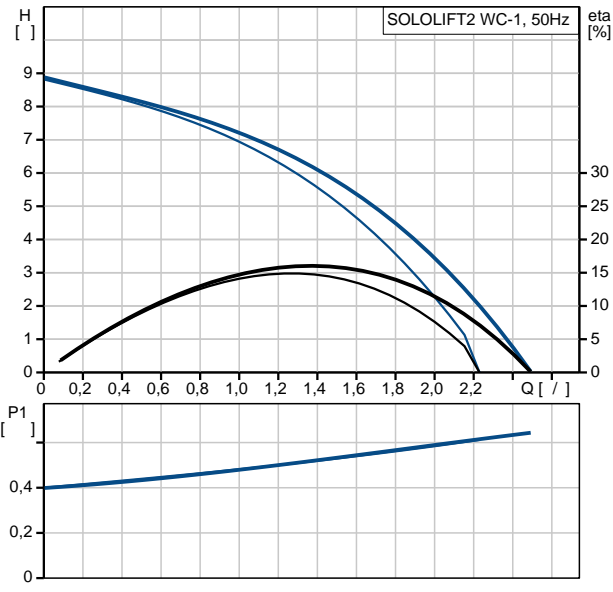
: -
 : -
 : -
 : -
 : -
 : -

			998.2 / 3
			: CE
		- :	ISO 9906:2012 Grade 3B
			32/36/40, DN 100
			22/25/28/32/36/40
			3X0,75MM2
		- :	
		- P1:	0.62
		:	50 Hz
		:	1 x 220-240 V
		:	3 A
	Cos phi -	- :	0,92
		:	2800 /
		(IEC 34-5):	IP44
		(IEC 85):	F
		:	1.2
		:	H05VV-F
		:	TYPE F (SCHUKO)
		:	
		:	7.25
		:	9.75

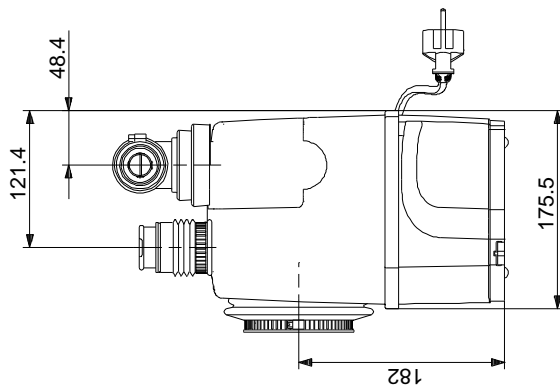
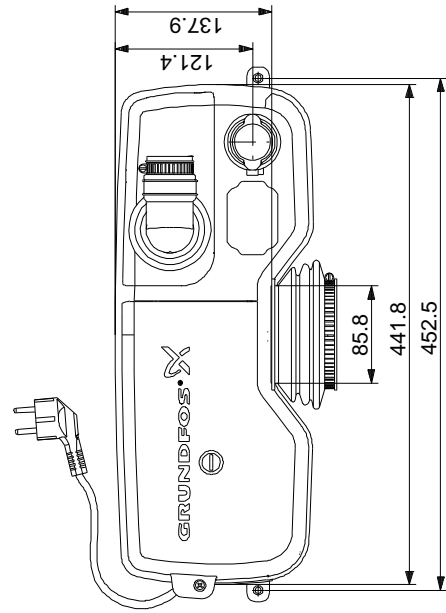
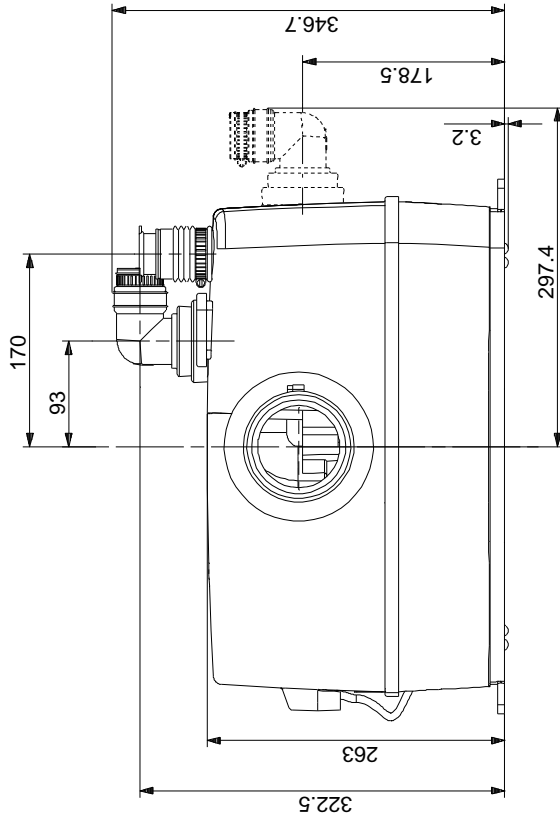
97775314 SOLOLIFT2 WC-1 50

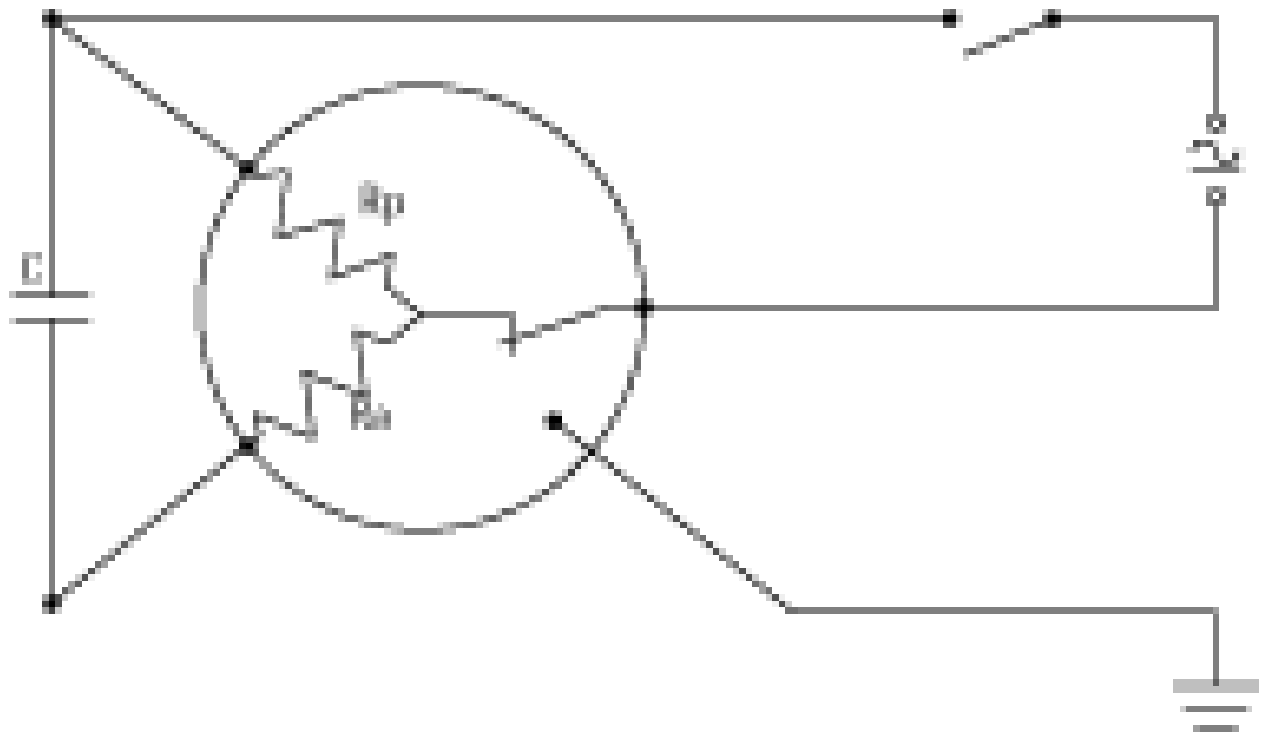


SOLOLIFT2 WC-1	
97775314	
EAN	5710624187234
8.5	
CE	
ISO 9906:2012 Grade 3B	
32/36/40, DN 100	
22/25/28/32/36/40	
3X0,75MM2	
50 °C	
998.2 / ³	
- P1:	0.62
	50 Hz
	1 x 220-240 V
	3 A
Cos phi -	0,92
(IEC 34-5):	2800 /
(IEC 85):	IP44
	F
	THERMIK S06-150-05
	1.2
	H05VV-F
	TYPE F (SCHUKO)
	7.25
	9.75



97775314 SOLOLIFT2 WC-1 50





! [], .