

1 **SOLOLIFT2 WC-3**



: [97775315](#)

Sololift2 WC-3 -

Sololift2 WC-3

Sololift2 WC-3

( )  
Ø22-40

« »

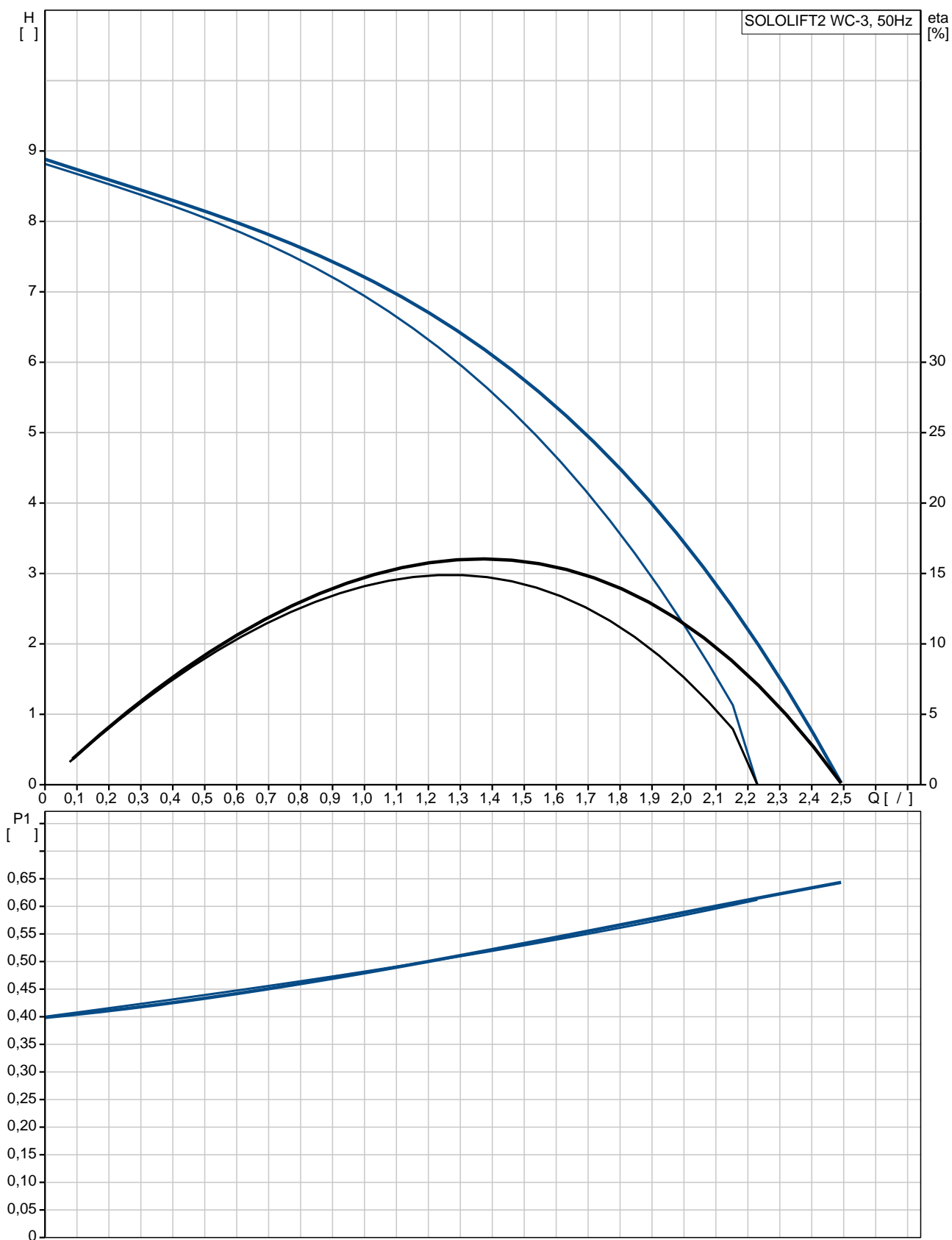
DN100  
( )

Ø36 40 ( )

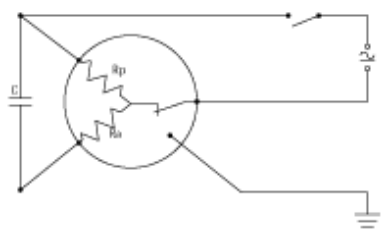
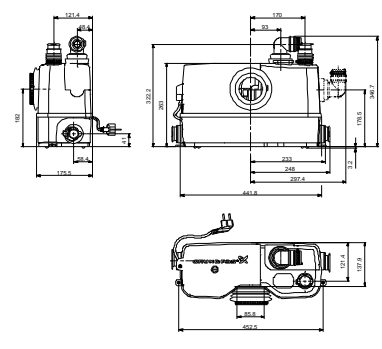
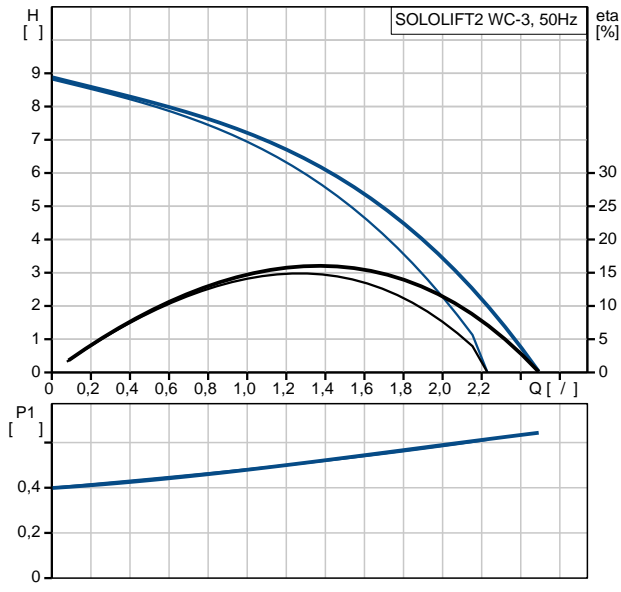
EN12050-2,



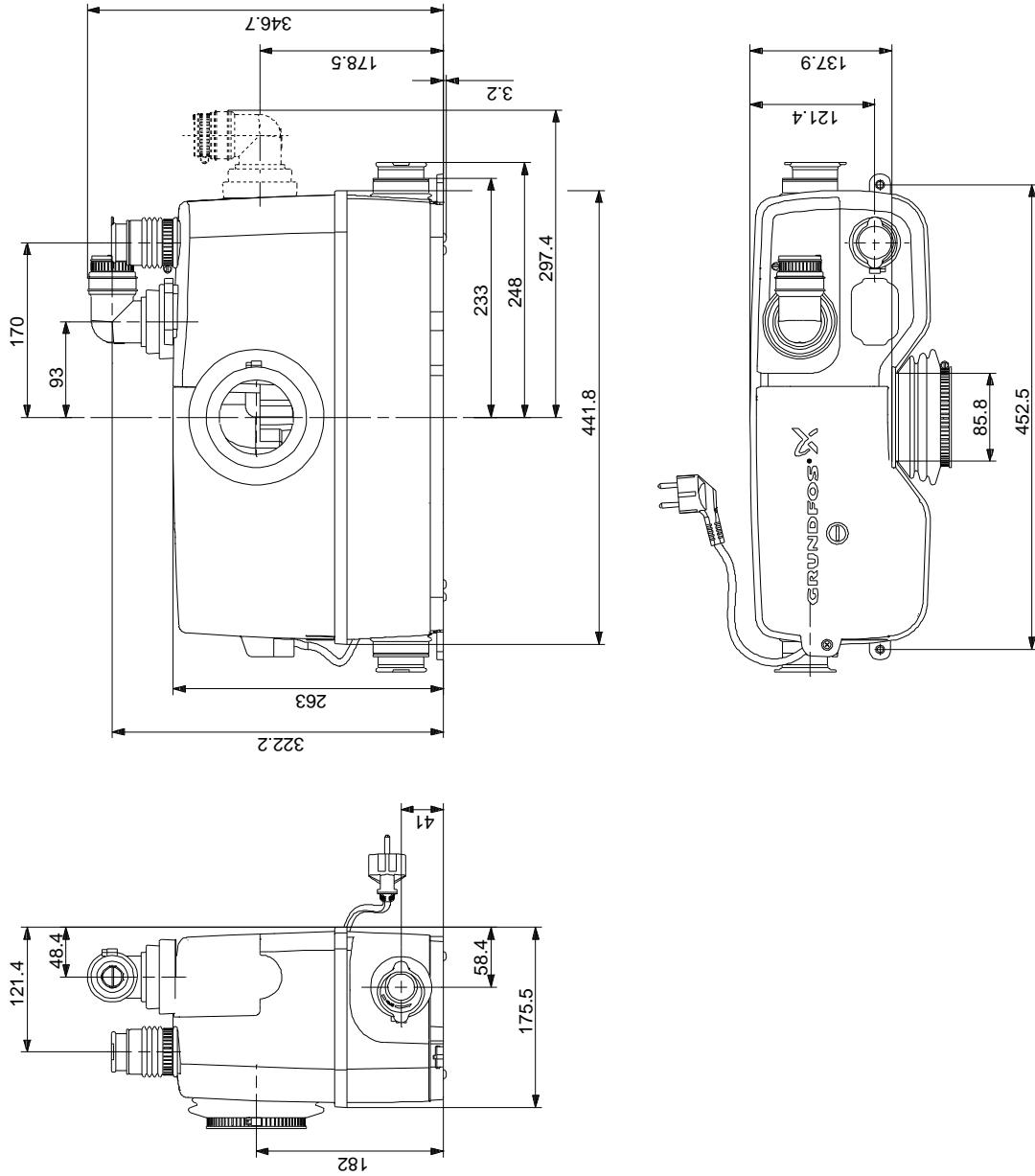
## 97775315 SOLOLIFT2 WC-3 50

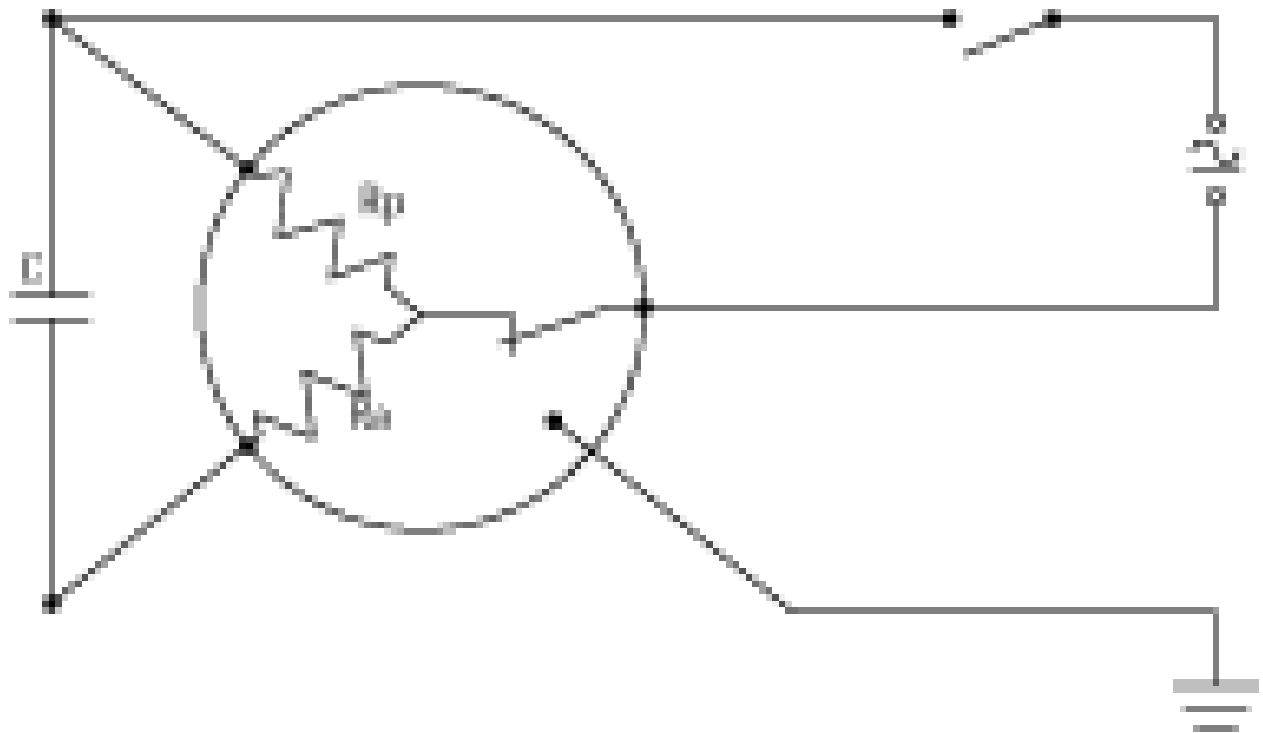


SOLOLIFT2 WC-3	
97775315	
EAN	5710624187241
8.5	
CE	
ISO 9906:2012 Grade 3B	
32/36/40, 36/40/50, DN 100	
22/25/28/32/36/40	
3X0,75MM2	
50 °C	
998.2 / ³	
- P1: 0.62	
50 Hz	
1 x 220-240 V	
3 A	
Cos phi -	0,92
(IEC 34-5):	2800 /
(IEC 85):	IP44
THERMIK S06-150-05	
1.2	
H05VV-F	
TYPE F (SCHUKO)	
7.3	
10	



## 9775315 SOLOLIFT2 WC-3 50





! [ ], .