



UP 20-14 BX PM

: 2 .. 95 °C
 : 60 °C
 : 983.2 / ³

TF : 95
 : CE, VDE

MS 68

, EPDM, PPO,

: 10
 : 1 1/4
 : 110

C : 0.6
 : 7
 : 50 Hz
 : 1 x 230 V
 3: 0.07 A
 : 0.6
 (IEC 34-5): IP44
 (IEC 85): F

: 1.35
 : 1.51
 : 0.003 ³

1 UP 20-14 BX PM



PM.

12-

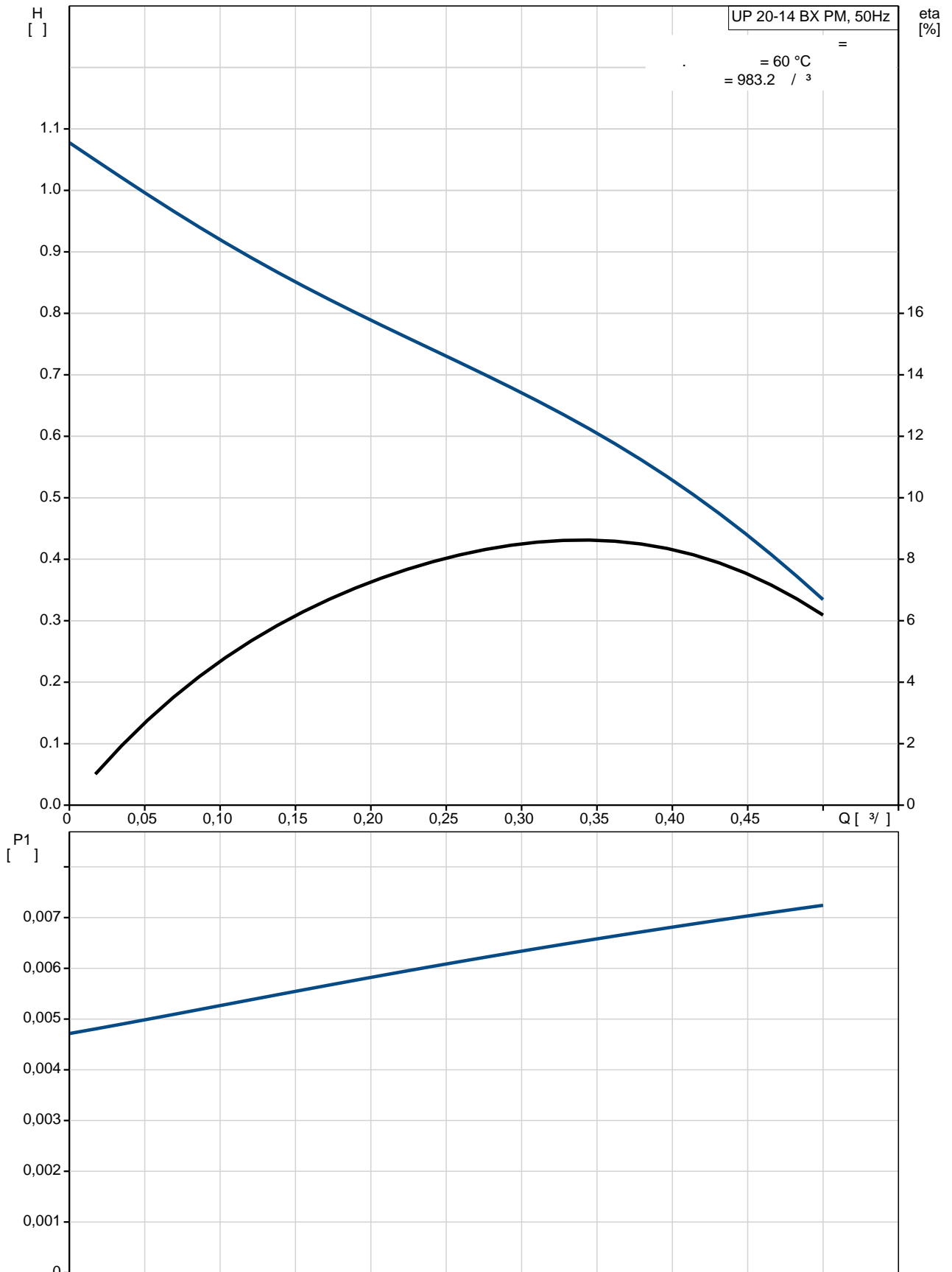
5-8

COMFORT

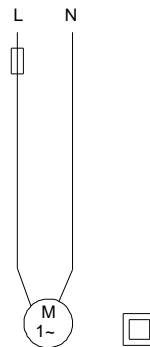
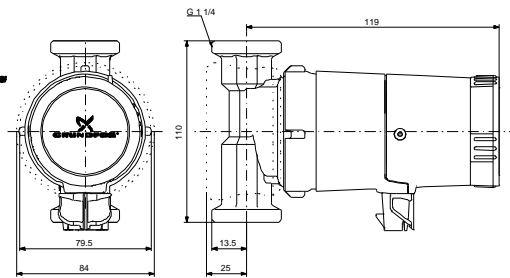
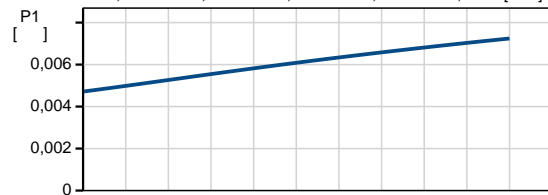
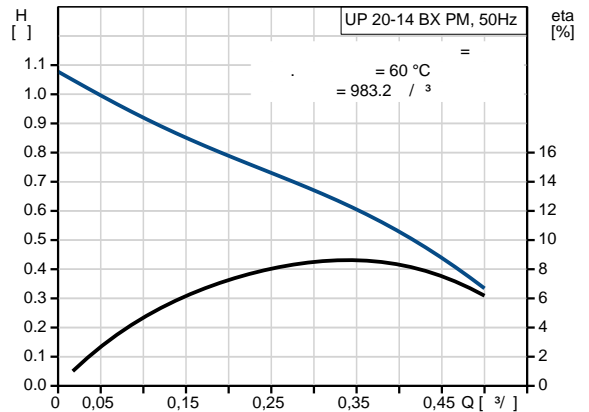
: EN 60335-1 EN 60335-2-51.

IEC 61140, II,

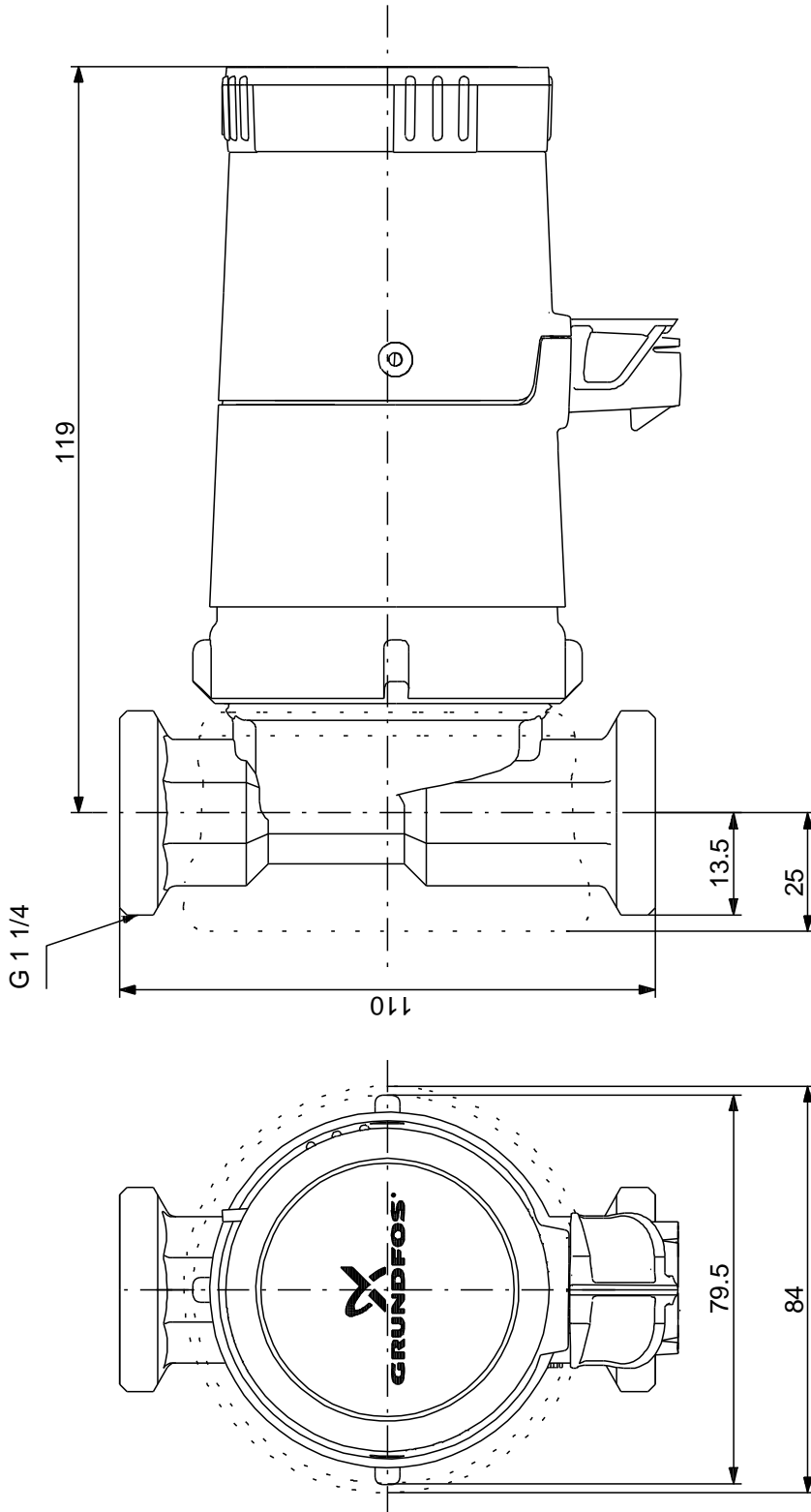
UP 20-14 BX PM 50



UP 20-14 BX PM	
EAN	
TF	1 14 95 CE, VDE
	MS 68 PPO, EPDM,
	10 1 1/4 110
	2 .. 95 °C 60 °C 983.2 / 3
C	0.6 7 50 Hz 1 x 230 V 3: 0.07 A 0.6 (IEC 34-5): IP44 (IEC 85): F
	1.35 1.51 0.003 3



UP 20-14 BX PM 50



UP 20-14 BX PM 50

