

1 Unilift KP 150 M 1



1-

F,

, 10

10

: 0 .. 50 °C
 998.2 / 3

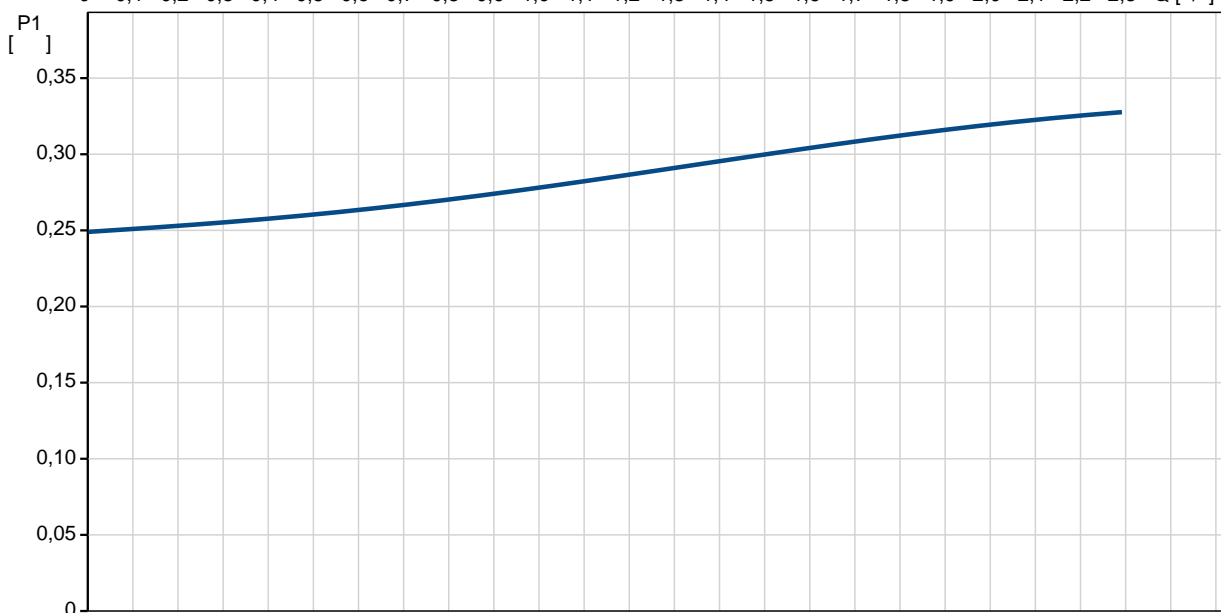
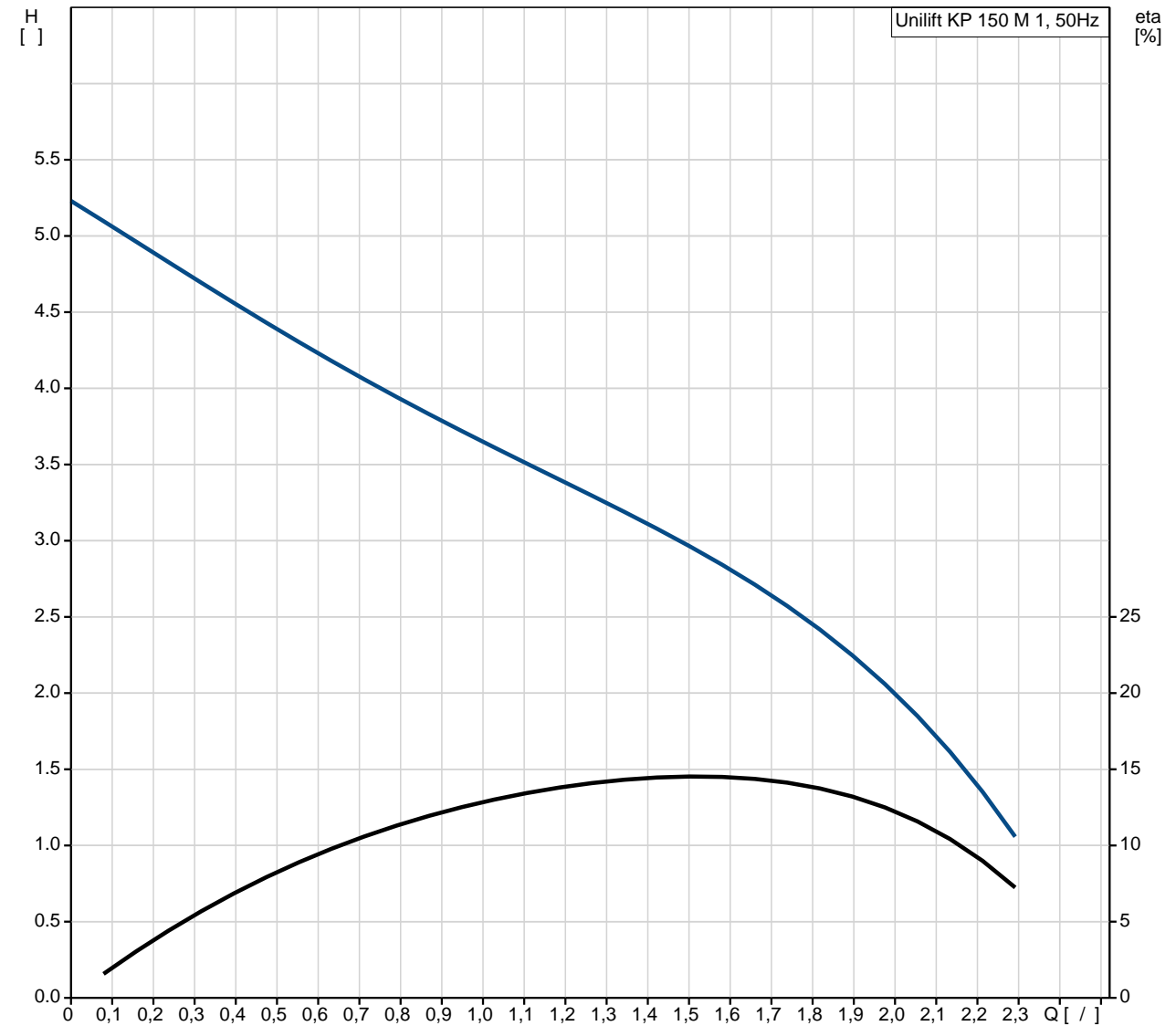
: 10

DIN W.-Nr. 1.4301
 AISI 304

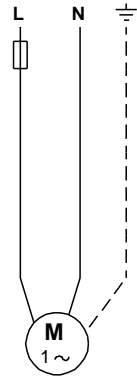
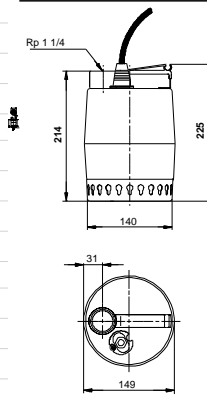
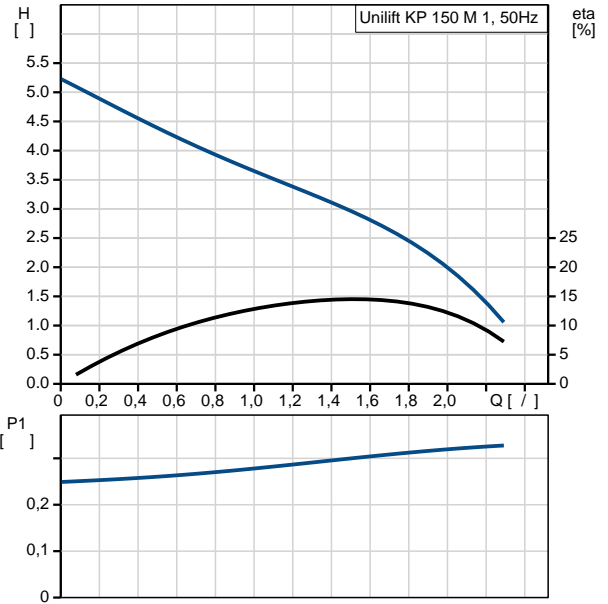
DIN W.-Nr. 1.4031
 AISI 304

C : Rp 1 1/4
: 7
- :
- P1: 300
8
: 50 Hz
: 1 x 220-230 V
: 1.3 A
- : 8 /400 V
(IEC 34-5): IP68
(IEC 85): F
: 10
: SCHUKO
:
: 6.5
: 6.5
: 0.013 ³

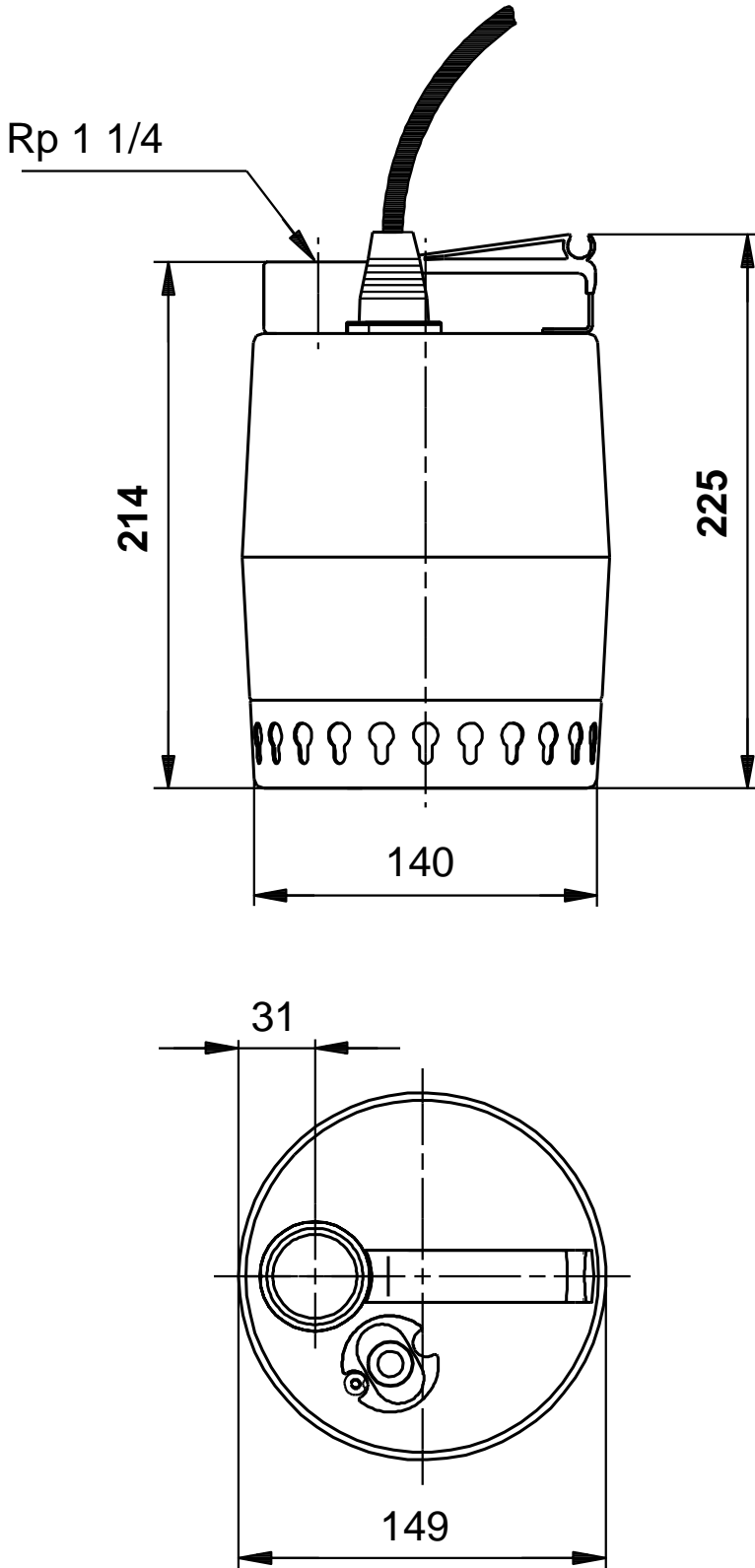
Unilift KP 150 M 1 50



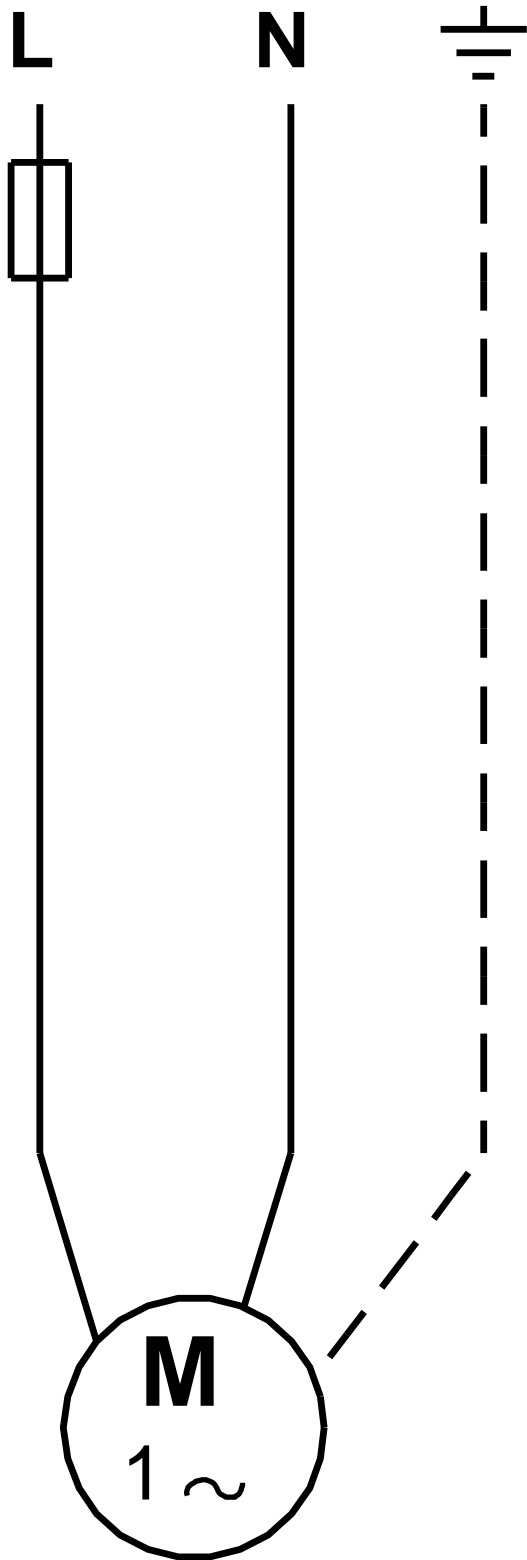
Unilift KP 150 M 1	
EAN	
Ma	2.36 /
	5.5
	10
	A
DIN W.-Nr. 1.4301 AISI 304	
DIN W.-Nr. 1.4031 AISI 304	
	Rp 1 1/4
	7
	0 .. 50 °C
	998.2 / ³
- P1:	300
C	8
	50 Hz
	1 x 220-230 V
	1.3 A
	8 /400 V
(IEC 34-5):	IP68
(IEC 85):	F
	CONTACT
	10
	SCHUKO
	6.5
	6.5
	0.013 ³



Unilift KP 150 M 1 50



Unilift KP 150 M 1 50



! [], .