

1 Unilift KP 350 M 1



1-

F,

, 10

10

: 0 .. 50 °C
 : 998.2 / 3

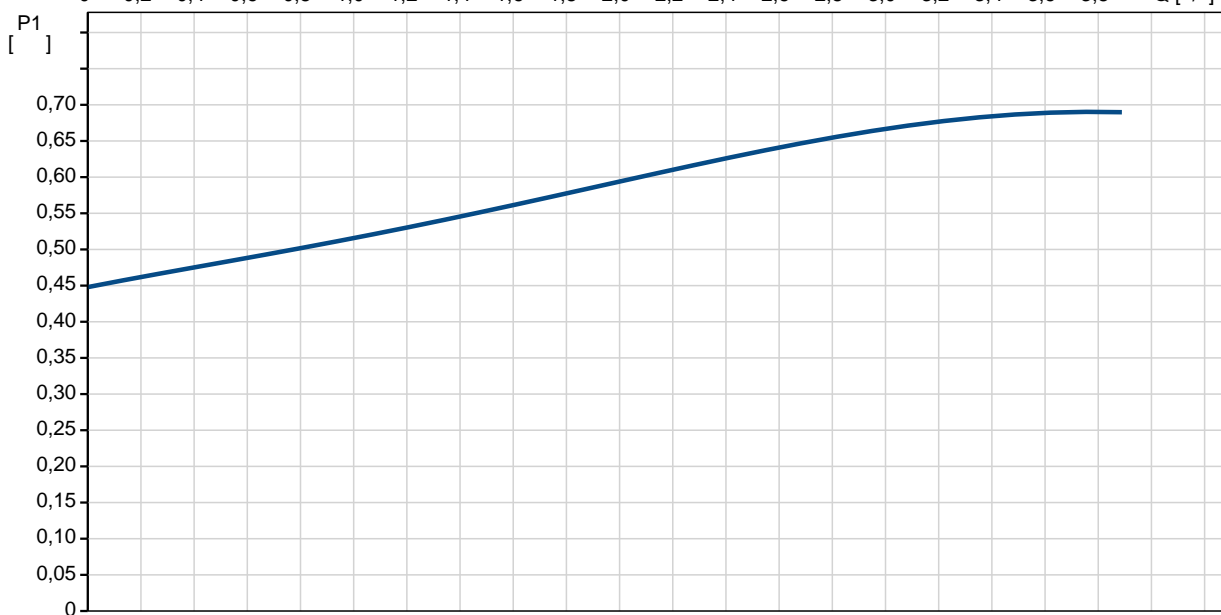
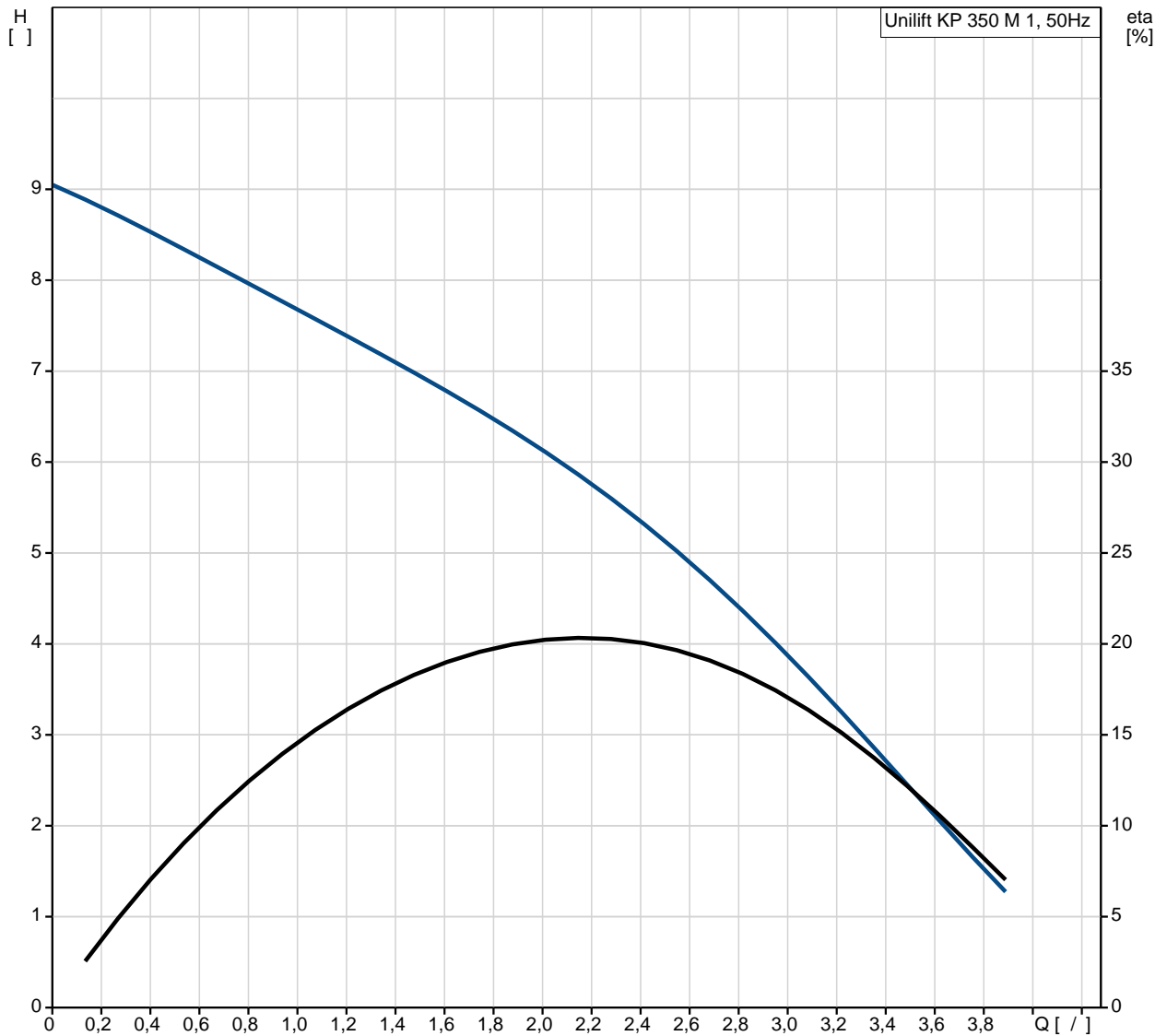
: 10

DIN W.-Nr. 1.4301
 AISI 304

DIN W.-Nr. 1.4031
 AISI 304

	:	Rp 1 1/4
	:	7
	- :	
C	- P1:	700
:	:	10
	:	50 Hz
	:	1 x 220-240 V
	:	3.2 A
	- :	10 /400 V
	(IEC 34-5):	IP68
	(IEC 85):	F
	:	10
	:	SCHUKO
:	:	
:	:	8
:	:	8.1
:	:	0.013 ³

Unilift KP 350 M 1 50



Unilift KP 350 M 1

EAN

Ma

3.89 /

9

10

A

DIN W.-Nr. 1.4301
AISI 304

DIN W.-Nr. 1.4031
AISI 304

Rp 1 1/4

7

0 .. 50 °C

998.2 / ³

- P1:

700

10

50 Hz

1 x 220-240 V

3.2 A

10 /400 V

(IEC 34-5): IP68

(IEC 85): F

CONTACT

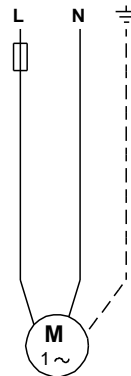
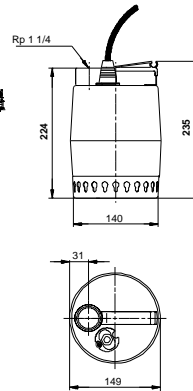
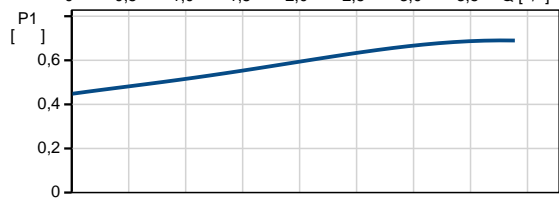
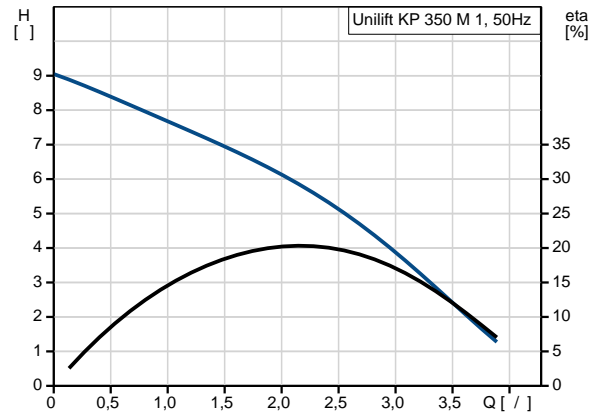
10

SCHUKO

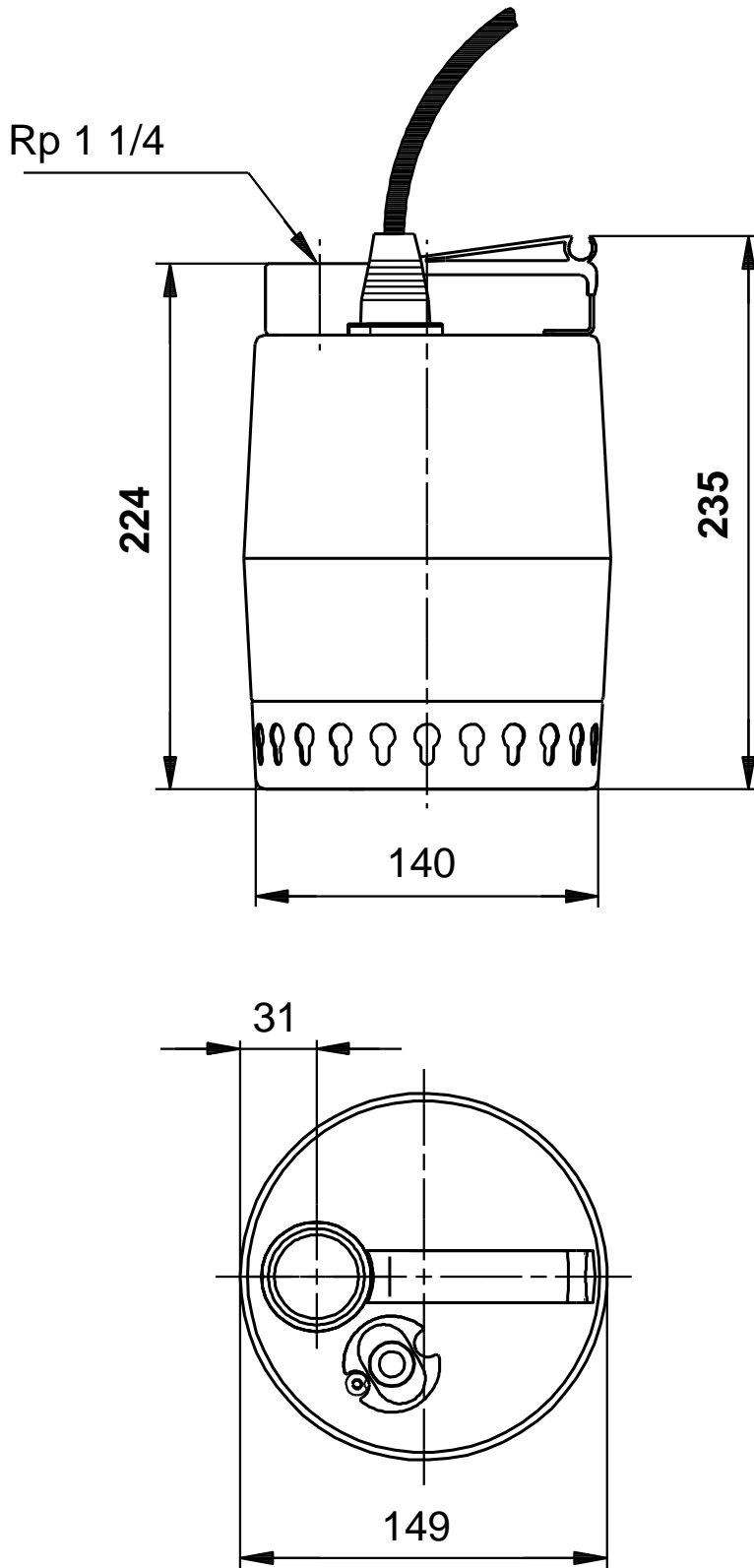
8

8.1

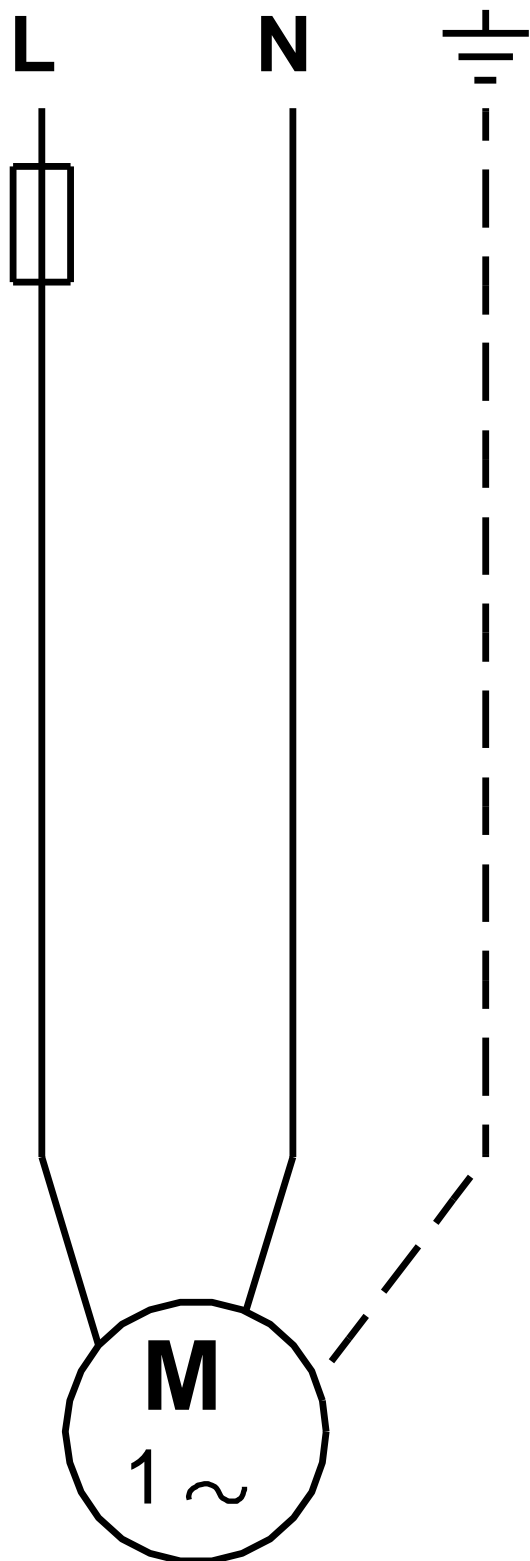
0.013 ³



Unilift KP 350 M 1 50



Unilift KP 350 M 1 50



! [], .