

1 UPS 25-70 180



: 96621354

, PES/PP.

1-

: 2 .. 95 °C
 20 °C
 998.2 / ³

TF

95
 : AAA,EAC

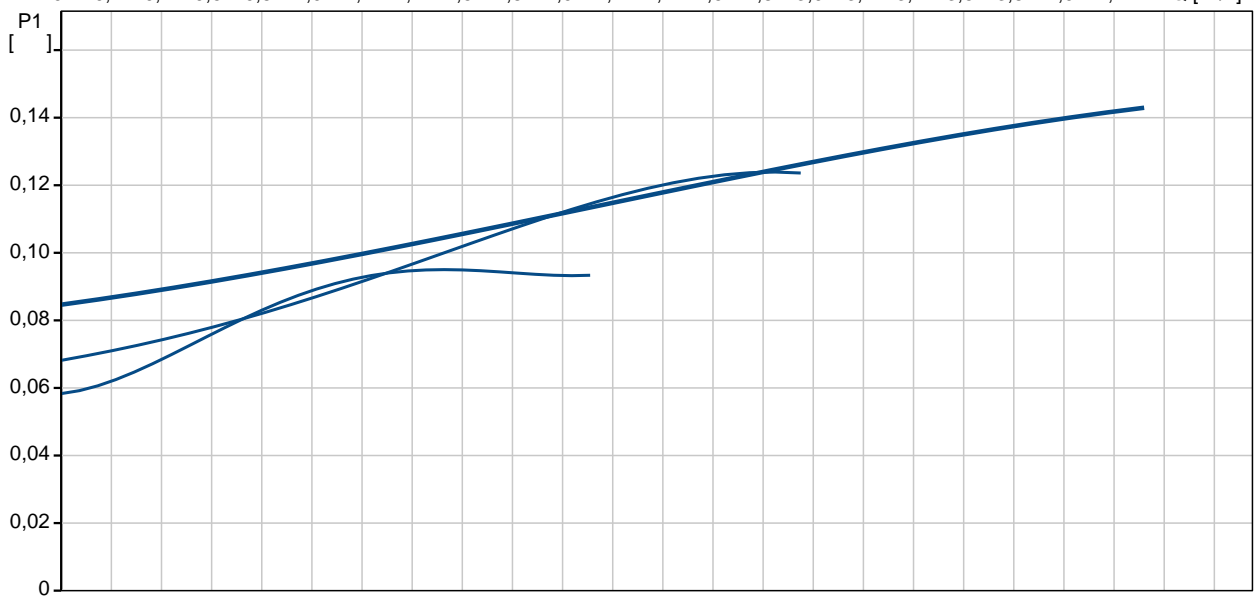
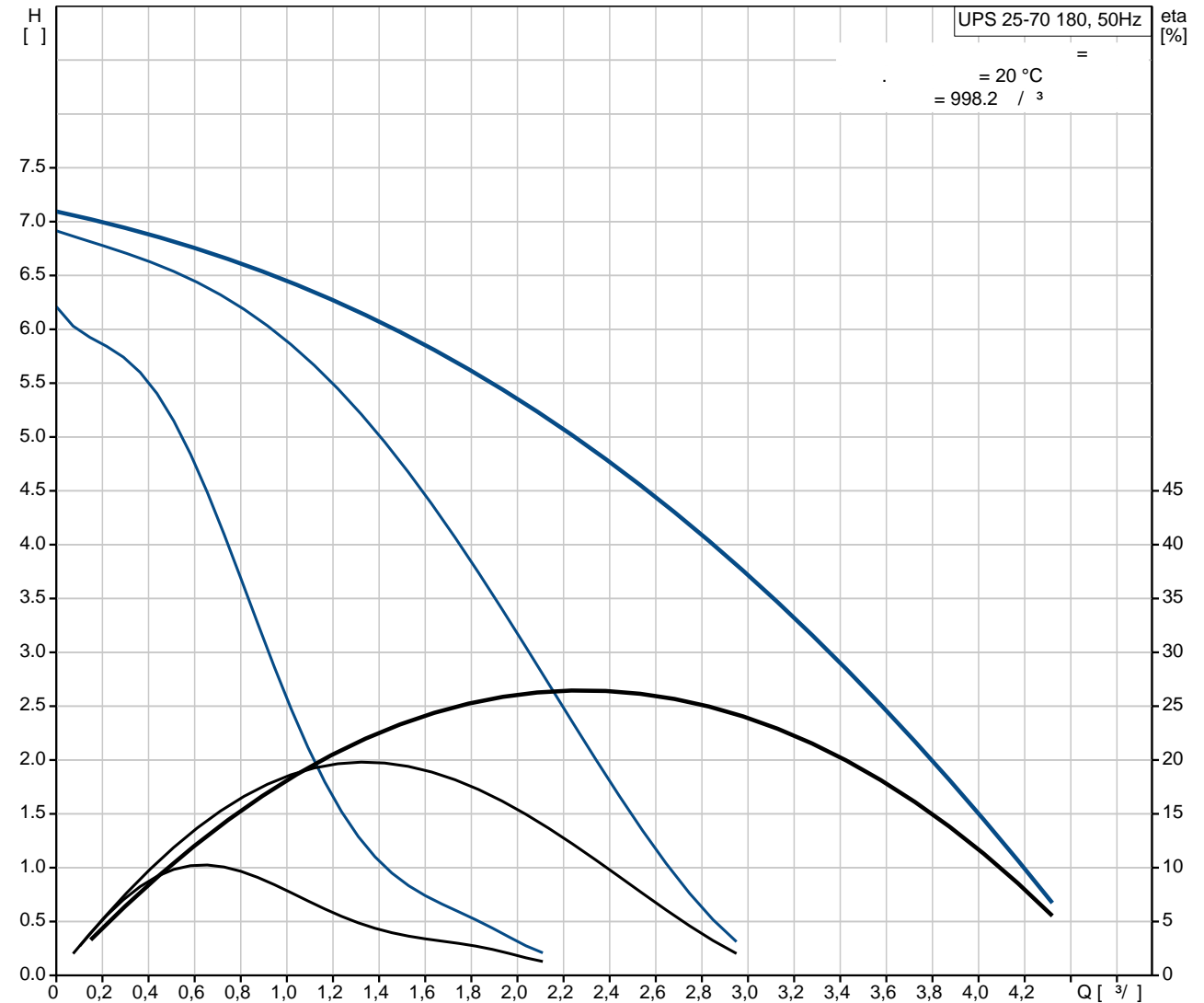
EN-JL1030
 ASTM 30 B
 , PES/PP

10
 G 1 1/2
 PN 10
 180

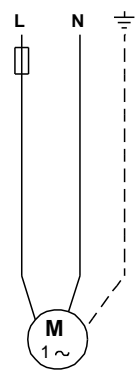
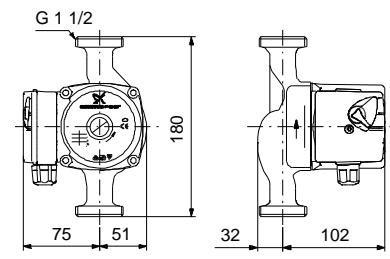
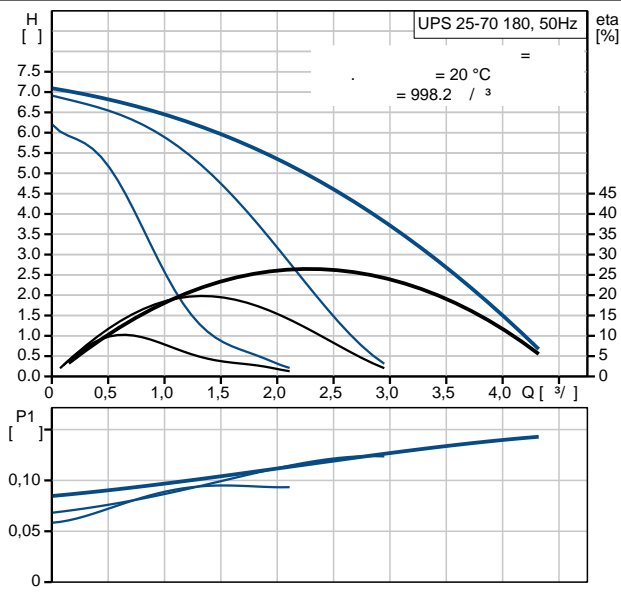
C : 2.5
 1: 95
 2: 125
 3: 149
 : 50 Hz
 : 1 x 230 V
 1: 0.46 A
 2: 0.58 A
 3: 0.65 A
 - : 2.5
 (IEC 34-5): IP44
 (IEC 85): H

:
 : 2.4
 : 2.6
 : 0.004 3

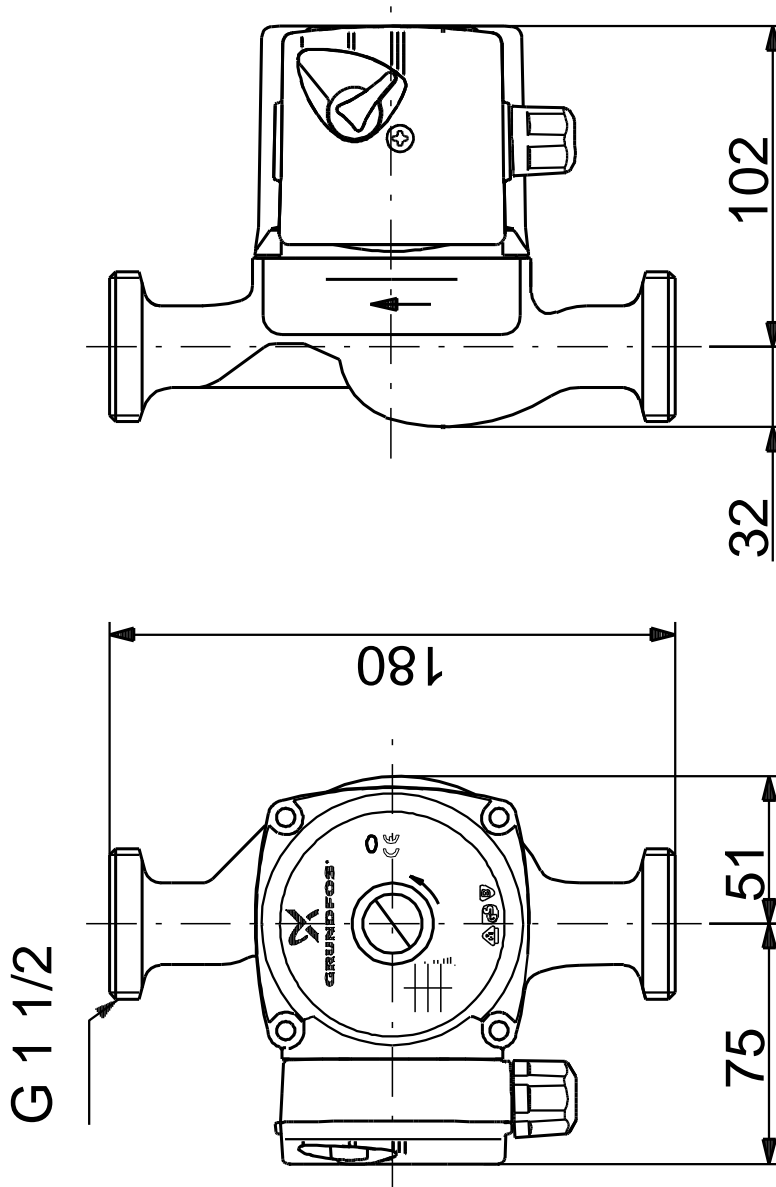
96621354 UPS 25-70 180 50



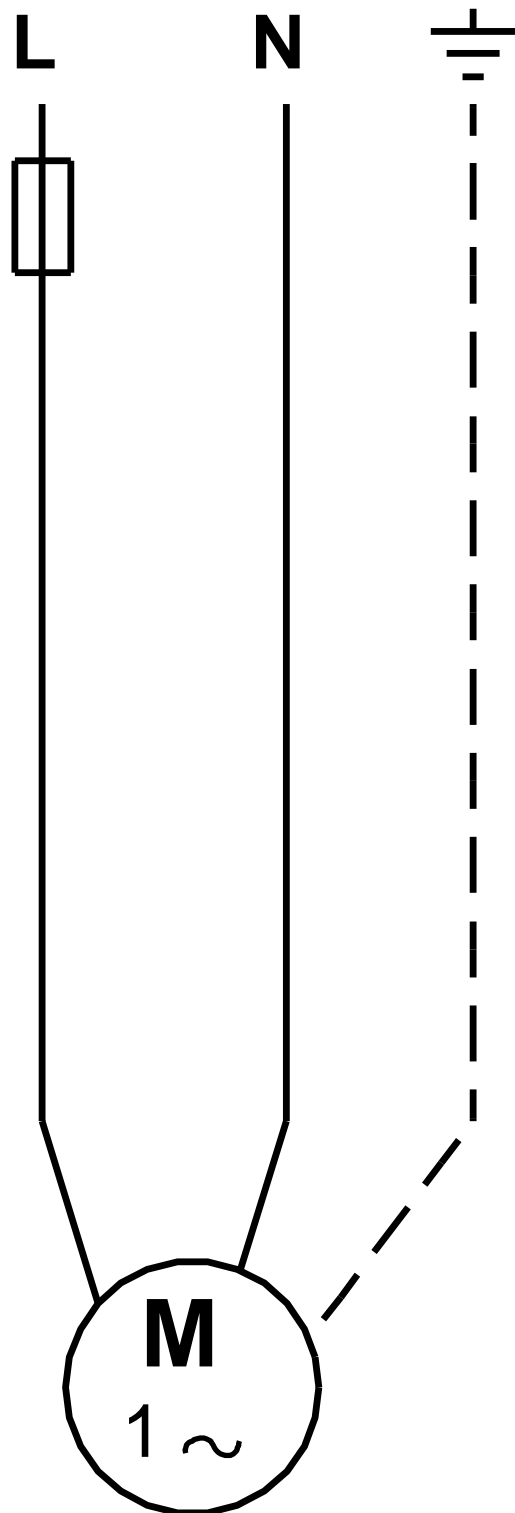
UPS 25-70 180	
EAN : 96621354	
5700834972690	
TF :	3
	70
	95
	AAA,EAC
EN-JL1030	
ASTM 30 B	
, PES/PP	
	10
	G 1 1/2
	PN 10
	180
	2 .. 95 °C
	20 °C
	998.2 / 3
C :	2.5
1:	95
2:	125
3:	149
	50 Hz
	1 x 230 V
	1: 0.46 A
	2: 0.58 A
	3: 0.65 A
	2.5
(IEC 34-5):	IP44
(IEC 85):	H
	2.4
	2.6
	0.004 3



96621354 UPS 25-70 180 50



96621354 UPS 25-70 180 50



! []